

# Town of New Lebanon

www.townofnewlebanon.com

May 2024

Upcoming Community Events at NL Jr/Sr HS

**2 Year Delay Performance:** 2 Year Delay will be performing with the Food Truck event in **Shatford Park** on **Wednesday, May 15<sup>th</sup>** beginning at **5:00pm**.

**Spring Concert and Art Show:** **Wednesday, May 22nd at 6:00pm** in the **JSJS gymnasium**. Come hear our outstanding student musicians perform and check out our new Rock and Soul band, 2 Year Delay!

**Memorial Day Brunch:** Our annual Memorial Day Assembly Program and Brunch will be at the Junior/Senior High School on **Thursday, May 23rd** beginning at **9:00am** in the **JSJS gymnasium**. All community members and local servicemen and women are cordially invited to attend this tribute to our fallen heroes.

**Graduation Parade:** Our annual graduate parade will take place on **Thursday, June 27<sup>th</sup>**, starting at **7:15pm** (weather permitting), **running from WBH to JSJS**.

## Open Office Hours:

The Town Hall is open for business:

**Supervisor:** Tues. 9:00am – 2:00pm, Thurs. 12:00pm – 5:00pm and by appointment

**Town Clerk:** Mon., Wed., Thurs. & Fri 9:00am – 5:00pm and by appointment if necessary

**Tax Collector:** Tues. 4:00pm - 6:00pm and Sat. 9:00am - 11:00am

**Assessor:** Mon. 8:00am – 12:00pm and by appointment

**Building Dept.:** Tues. & Thurs. 9:00am – 12:00pm & **CEO:** Tues. 5:00pm – 7:30pm

**Court Office Hours:** Tues. 9:00am – 3:00pm & Thurs. 12:00pm – 6:00pm (Court in session: @ 5:00pm on Thursdays)

**Historian:** By appointment



## Town Government

Supervisor:

Tistrya Houghtling  
supervisor@townofnewlebanon.com

Councilmembers:

Elizabeth Kroboth  
[ekroboth@townofnewlebanon.com](mailto:ekroboth@townofnewlebanon.com)

Steve Powers  
[spowers@townofnewlebanon.com](mailto:spowers@townofnewlebanon.com)

Craig Skerkis  
[cskerkis@townofnewlebanon.com](mailto:cskerkis@townofnewlebanon.com)

Susan Tipograph  
[stipograph@townofnewlebanon.com](mailto:stipograph@townofnewlebanon.com)

Town Clerk – Marcie Robertson  
[townclerk@townofnewlebanon.com](mailto:townclerk@townofnewlebanon.com)  
518-794-8888

Did you know that the Town Clerk's office maintains an email database that receives all board meeting agendas, meeting minutes and other important documents and updates? If you would like to be added to this database please send request with your email address to [townclerk@townofnewlebanon.com](mailto:townclerk@townofnewlebanon.com). Your email address will not be shared.

Regular Town Board meetings are held the 2<sup>nd</sup> Tuesday of each month at 6pm. The public may view the meetings via the live stream link at:  
[https://townhallstreams.com/towns/new\\_lebanon\\_ny](https://townhallstreams.com/towns/new_lebanon_ny)

Mailing Address:  
Town of New Lebanon  
PO Box 328  
New Lebanon, NY, 12125

## From the Office of the Town Clerk

**Rabies Clinic:** Unfortunately there will not be a clinic in New Lebanon this year.

**Habitat & Access Stamp Sales Contest:** Our 2023 results are in and we are happy to announce that we came in second in overall sales of Habitat & Access Stamps for the entire state of New York. Thank you to all of our Habitat Hero's that participated and helped us achieve this. Hunting licenses for the 2024-2025 season will go on sale sometime in early August, we look forward to seeing you then.

---

## The Next KISS Program at the Town Hall

The Columbia County KISS Program is once again available to seniors in every town in Columbia County. The KISS Program, founded by Columbia County Clerk Holly Tanner, stands for Keeping the Identities of Seniors Safe. It was designed to protect the identities of our seniors while assisting them in the shredding of their sensitive materials. Seniors are encouraged to contact their local Town Hall for more information on the program. Justin Weaver, Columbia County Clerk's Records Services Manager, is overseeing the program and can also be contacted with any questions at 518-822-0143. The next KISS program runs at the NL Town Hall from **June 17th – June 28th**. Our hours for drop off are Mon, Wed, Thurs and Fri from 9-5. Please stop by the Town Clerk's office to sign your form for shredding.

---

## Walking Trails in Shatford Park

The walking trail system in Shatford Park is still in the construction phase. It is very important that everyone stay off the trails until they are complete and officially open. The town will announce via an email blast, website post and Facebook post when the trails are open and ready to use. They should be officially open within a month or two.

Once the trails are open, they are for walking, running and bicycling ONLY. It is harmful to the trails for any motorized vehicles (quads, dirt bikes, electric scooters, etc.), horseback riding and other higher impact activities. Please help us keep the trails nice and usable for all by using them only for their intended purpose. Stay tuned for the official announcement of the opening of the walking trail system!

---

## Skatepark in Shatford Park

The skatepark in Shatford Park will be opening soon! We are at the finish line and just waiting now for consistent warm, dry weather to finish the coatings and open the skatepark. A huge thank you to Jesse Newton and his volunteer team for all their hard work getting the ramps up and running!

---

## 2024 Town Clean-Up Day (Dump Day)

The Town will be holding its 11th annual town clean-up day on Saturday, September 7th from 8am – 2pm. Please save the date on your calendar. Information on how to obtain a punch card, what items are acceptable to bring, and more will be in the August 1st newsletter.

## From The Lebanon Valley Protective Association

The fire hall is available to rent, just call 518-794-9331 and someone will contact you.

The LVPA is always in search of new members. If you want to get involved in our community, what a great way to do so! If you are interested in joining the LVPA, please call 518-794-9331 and leave a message with your name and number, someone from the LVPA will get in touch with you.

If you are in need of a FREE smoke detector, CO2 detector or a fire extinguisher, please contact the LVPA.

---

## News from the Shatford Park Playground Design Committee

### **Help Us Create a Universally Accessible Playground in New Lebanon!**

As part of the Shatford Memorial Park Master Plan, the Town applied for a grant through the office of NYS Parks, Recreation and Historic Preservation. The Town was awarded a \$500,000 grant for a walking trail system and a new playground in Shatford Park. The Town Board has formed a committee to help design a Universal Playground for Shatford Park. Universal Playgrounds are designed to go beyond the legal requirements for accessibility to ensure that children of *all* abilities can enjoy the amenities of the playground together. Children with sensory processing disorders, language and auditory challenges, and mobility devices can enjoy the playground's diverse design as well as some features of more standard playground designs.

The Shatford Park Playground Design Committee is working to design the playground at Shatford Memorial Park in the Town of New Lebanon and make it an inclusive play area for the whole family, from the youngest to oldest, no matter their ability or disability. There is currently no Universal playground in our area – the closest are in Dutchess County, NY and the Hartford, CT area – both over an hour drive from our town. This playground project presents an opportunity to address a growing need in our local community, but also to bring visitors from surrounding areas seeking a Universal Playground experience for their family.

The Playground Design Committee has been formed as an advisory committee to the Town Board, with a specific focus on identifying suitable playground equipment and design, as well as working within the community to build support to help build the playground. If you are interested in learning more about the project, please contact Paul, the committee chair at [PSMPECE@gmail.com](mailto:PSMPECE@gmail.com). Committee meetings take place at the New Lebanon Town Hall the first Tuesday of each month at 6:30pm. We would love to hear your input and have your support!

## Wise Words from a Predecessor

A resident recently brought me a copy of an article published in The Chatham Courier and written by my predecessor, Bruce Baldwin, in 1992 while he was the Town Supervisor of New Lebanon. As I read the article, it reminded me how relevant his message is even today. These words are not mine, but rather I am sharing Bruce's words with you all today to remind us of the importance of peaceful co-existence.

### ***"Peaceful Co-existence – by Bruce Baldwin, Supervisor, Town of New Lebanon***

*On a pleasant summer night not so long ago, I was reminded of the balance and harmony that creates a true community. At the eastern end of my town, New Lebanon, in a historic building, formerly occupied by the Shakers, there was a chamber music concert; a well-known pianist gave an artistically polished performance of works by Schubert, Beethoven and Mozart. At the western end of the same town, along Route 20, hundreds of people gathered on the same summer evening to sit in bleachers and share in the heady excitement of racing cars. Both events happened simultaneously, neither event overpowering the other, both sets of participants equally experiencing pleasure.*

*And so it is in many small towns across New York State and America; the freedom to live as an individual, both at work and in leisure and yet to coexist harmoniously with others who might have different values. And what of government's role in such a small town? Is it possible to achieve a balance among the various competing interests of a small town? Are environmental and aesthetic values as important as economics, the right to make one's living? What is the proper role for zoning in a town of 2000 people as diverse as New Lebanon? What position should town government take when a dispute between neighbors is thrust upon the town?*

*New Lebanon is not the only town to face these questions. Wherever there is a diversity in population, the problems are always similar, the solutions never easy. What makes New Lebanon unique, however, in Columbia County, is our long historical tradition of coexistence with diversity. More than a hundred years before the county became popular with weekenders, people came from all over the United States to drink the famous waters of Lebanon Springs and to share in the fellowship and tranquility of the Shaker community. That legacy of the Shakers and their partnership with the townspeople became an important lesson in the way people can work together while having different value systems. That strong tradition of harmony in diversity has survived and today New Lebanon is home to a Shaker museum, first class concerts and gourmet restaurants, as well as off track betting and a speedway. But local government still must play a role. A government of the people monitors, oversees, and facilitates the community to prosper. Local government provides a framework, a master plan, to incorporate existing trends and plan for the future. A hundred years ago, the people of New Lebanon never had to concern themselves with a property re-valuation, or subdivisions and zoning, or toxic waste. It was a simpler time, it was still the infancy of our country and because survival was our primary focus, we were not aware of the other issues. In such a simpler time, there were less expectations of government to solve problems.*

*But there are more problems today, just as the problems of infancy give way to the larger issues of adolescence. There is a danger today in wanting to place blame and avoid the hard decision. At the town level, we want to blame the State and Federal government for imposing social mandates. We all want a clean environment, parks, good schools, without a heavy price tag. We look eagerly on the horizon for some shining white knight to ride to Washington and solve everything.*

*We have forgotten that we are the government. We are the planning board, the zoning board, the Town government. It is our neighbor with whom we must coexist. No government, whether it be town, state or federal can do it all. As we approach our 216<sup>th</sup> birthday on July 4<sup>th</sup>, we must look around at the greatness of this land and seek the personal satisfaction and community harmony that can only come from participation."*

## Columbia NE Repair Café

The weather is getting more springlike, so if you are inclined to do spring cleaning, check your stash of broken or torn objects and plan to bring a couple to the **first collaboration between the New Lebanon Library and the ColumbiaNE Repair Cafe committee on May 18, from 10-1 pm at the library**. It's the same day as the **Climate Smart Communities bike clinic** in Shatford Park and the same weekend as the **library's book sale** so get in the spirit of repair, reuse, and recycle all sorts of things. We are planning to have a kids' table where kids can take apart old stuff - if you have a definitely broken radio, we might be able to use it. If you'd like to volunteer as a fixer or to make refreshments or generally help out, please let me know.

Since the inception of New Lebanon's Repair Cafe sessions in 2021, about 500 household items and articles of clothing —including small electronics, lamps, and clocks, computers — have been restored to new life thanks to the skills of local volunteers. The repairs we will do on the 18th include: general mechanical and electrical repair like lamps and vacuum cleaners, machine and hand sewing and darning. clocks, glueing of ceramics and other small items, small furniture repair, maybe some knife sharpening, and gardening advice.

Mark your calendars for the next cafe at the Hoags Corner Firehouse in East Nassau, on Saturday, June 8, 10-2. For more info, email [ColumbiaNErepaircafe@gmail.com](mailto:ColumbiaNErepaircafe@gmail.com), or look for us on Facebook at ColumbiaNE Repair Café.

---

## From Charlie's Pantry

Charlie's Pantry offers free food and household supplies to New Lebanon School District residents. We are located behind the Immaculate Conception Church at 732 Route 20 and are open every Saturday 10:30am - 1:00pm. We can make an appointment for an emergency if a family runs out of food. Any questions please contact Georgette 518-794-0156 or Peter 518-794-0544.

---

## Memorial Day Parade

The Memorial Day Parade will kick off from Shatford Park at 8:30am line-up, 9:00am step-off on Monday, May 27<sup>th</sup>. It will culminate at the Cemetery of the Evergreens around 10:30am with a special presentation. If you are interested in participating in this year's Memorial Day Parade, please contact Lenny Brown at 518-788-5047 or [Lennybrown518@gmail.com](mailto:Lennybrown518@gmail.com). Any group, organization, old cars or individuals are welcome to march in the parade! We hope to see you there!

---

## NY State Burn Ban

The NY State Burn Ban is still in effect through May 14<sup>th</sup>, 2024. Once the ban has been lifted, you can call 518-828-4114 to register a controlled burn.

## Lebanon Valley Senior Citizens

LVS meets the first and third Friday of each month except in the winter, January through March meet only the third Friday of the month at the old firehouse, at the corner of Route 20 and Shaker Road: 523 US Route 20 New Lebanon, NY 12125. As always anyone 55yrs or older is welcome to become members. Membership is only \$15.00 a year and free to anyone 80yrs or more. If you would like to join, just email Donna Moshimer at LebanonSeniorCitizens@gmail.com with your address. If you have any questions, please call Mary Defreest 518-733-0009 or William Shannon (518) 938-1039.

The first meeting of each month will be the business meeting with deserts and beverages.

### **2024**

#### **May 2024**

**May 3** regular meeting

**May 17** Game Day with game day food potluck and bring bake sale items.

**May 18** Bake sale with book sale at Episcopal church for NL library

#### **June 2024**

**June 7** regular meeting

**June 21** pizza day

**June 27** Aisle of Shoals trip NH Fosters restaurant and cruise \$70

#### **July 2024**

**July 5** regular meeting

**July 19** picnic lunch food potluck

#### **August 2024**

**August 2** regular meeting

**August 12** Newport Playhouse Trip Apx \$86.95

**August 16** summer salad potluck

#### **September 2024**

**September 6** regular meeting bring bake sale items.

**September 7** bake sale at dollar store/post office NL and raffle baskets

**September 19** trip Lake George steamboat and dinner theater \$94.50

**September 20** Remembrance luncheon

#### **October 2024**

**October 4** regular meeting

**October 18** Halloween party come in costume awards for top 3 costumes.

#### **November 2024**

**November 1** regular meeting

**November 15** Thanksgiving dinner potluck

#### **December 2024**

**December 6** Christmas Party

**December 20** regular meeting

### **2025**

#### **January 2025**

**January 17** soup and sandwiches

#### **February 2025**

**February 21** soup and sandwiches



## From The Archives of the Lebanon Valley Historical Society

From "Civil War Pharmacy" Michel A. Flannery 2004

One of the larger and more interesting manufacturers during [the Civil War] was Tilden and Company of New Lebanon, New York. Founded in 1824 by Elam Tilden....this business was greatly expanded by his son Henry A. Tilden. Pharmacy pioneer William Procter Jr, invited by Tilden to view his New Lebanon facility in 1851, gave this interesting and detailed account of one of the largest antebellum drug manufacturers – certainly the preeminent botanical house- then in operation.

"Their factory is an extensive, oblong three storied building, in the basement of which is a powerful steam engine which performs the double duty of propelling the powdering apparatus and of driving a double acting air pump connected with their vacuum evaporators. The recent plants collected for extracts are brought to the mill from the gardens, reduced to a coarse pulpy state by a pair of chasers (a type of grinding mill), and subjected to a powerful screw press to extract the juice. This is clarified by coagulation, strained and the pure juice introduced into the large vacuum apparatus, holding several hundred gallons, where it is concentrated rapidly to a syrupy consistence, at a temperature varying 110 – 130 degrees, almost entirely free from the deteriorating influence of the atmosphere....They make annually about 8,000 pounds of extracts from green plants and roots...These extracts in the aggregate according to Mr. Tilden's estimate, are derived from about 300,000 lbs. of green material and require the evaporation of more than 20,00 gallons of juice..."

Tilden did not market his products directly to the public. His entire inventory was sold strictly to physicians or pharmacists. Tilden published books designed for practitioners listing dosage forms ...with explicit instructions for their use and preparation. Procter had a very favorable impression of the Tilden Company, calling it 'directly beneficial to the medical interests of the country.'

The LVHS has an extensive collection of formulae, drug lists and journals of the Tilden Company in our archives, available for research.



Come check out the beautiful display of some relics representing a portion of New Lebanon's history in the glass display cabinet in the town hall meeting room! A huge thank you to the Lebanon Valley Historical Society (LVHS) for creating the display. The current display focuses on the pharmaceutical history of New Lebanon, featuring items from the Tilden Company. They will be displaying different parts of the Town's history over

## Exciting News & Summer Events From Our Recreation Commission

The Recreation Commission has been busy planning activities to get our community together. If you're interested in helping out with an event, leading a walk, or have event ideas or requests, please let us know at [nlrecreation03@gmail.com](mailto:nlrecreation03@gmail.com) we'll try to make it happen.

Monthly Community Walks are held in the warmer months, join us to see more of our beautiful town. We held two successful Newcomers events last year, welcoming dozens of new people to town. Please join us for the next one if you're new here, or if you've been here a while and would like to make some new friends.

Mark your calendars for the Town Picnic, Yard Sale and Music in the Park

### **You asked, we made it happen:**

Did you know that the Shatford Tennis courts have Pickleball lines? Racquets and balls were recently donated to the upcoming Library of Things program if you want to try it out for free.

Open swim nights are at the Shatford Pool on Mondays and Wednesdays for a small annual fee. On Thursday nights, Joe Ogilvie teaches water aerobics, classes have a small fee.

### **2024 Planned Events:**

#### **Food Truck Music Night:**

##### **May 15 - 5-7PM - Shatford Pavilion 170 Old Post Road**

Featuring the high school band, 2 Year Delay, and local food truck Notorious BITE will be selling food and beverages.

#### **Community Walks:**

Tell us about your favorite walking path or the best view. In warmer weather we're hoping to have a monthly meet-up for kayaking/canoeing on Queechy Lake. We need a volunteer to lead it.

If you're planning to join a walk please RSVP to [NLRecreation03@gmail.com](mailto:NLRecreation03@gmail.com) so we know how many people to expect. Please send your walk ideas or ask to be added to the walk reminder list.

##### **Sunday, May 19 at 10AM** - Corkscrew Rail Trail walk led by Joe Ogilvie

Meet at the Train Depot on Tilden Road, behind the former K Shack.

##### **Sunday, June 9 at 10AM** - Hand Hollow walk led by Abbie Shoobs

Hand Hollow Conservation Area is part of the Columbia Land Conservancy  
4079 County Rd 9, East Chatham, NY (just off route 20)

##### **Sunday, July 7th at 10AM** - Sassafras walk led by Carol Reichert

The Ruins at Sassafras Museum

194 Darrow Road (Please park in the field across the street.)

The walk will take us past the Shaker Chair Factory and the foundations of various Shaker buildings.

We'll be crossing fields with gorgeous views.



## Recreation Commission News (Continued)

**Sunday, August 25 at 10AM** (this date may change)

Shaker Swamp Walk - led by Bruce Shenker - Details to follow.

Tour the Shaker Swamp trails led by members of the Shaker Swamp Conservancy.

This was last year's best attended walk, we had a beautiful day.

It is a steep downhill and uphill ramble, with muddy sections.

About 2 hours.

### **Newcomers Meet and Greet events:**

Did you recently move to our wonderful town, are you looking to make new friends and finally meet some neighbors? We want to meet you too!

**June 8th at 1PM**

**September 14th at 1PM**

Meet at Roaring 20's -565 US 20/22

Snacks will be provided, drinks are available for purchase.

Please contact [nlrecreation03@gmail.com](mailto:nlrecreation03@gmail.com) to RSVP and to be added to the event notification list.

### **Town Picnic and Music in the Park:**

**August 11th from Noon to 4** - Shatford Pavilion 170 Old Post Road

The band lineup will be announced on the Music in the Park Facebook page. The town and local businesses supply hamburgers, hot dogs, corn, watermelon and soft drinks. Please bring a side dish or dessert to share with your neighbors. Roaring 20's will have beer and wine for sale. We'll also have a bounce house too!

We could use some face painters and helpful volunteers.

### **Doug Banker Memorial Music in the Park:**

**September 15 - Noon to 4**

The band lineup will be announced on the Music in the Park Facebook page. Notorious B.I.T.E. will be selling food, Roaring 20's will be selling beer, cider and wine. If you have a local band and want to be considered to play at a future MITP event, please contact [nlrecreation03@gmail.com](mailto:nlrecreation03@gmail.com)

### **Town-Wide Yard Sale:**

**Planned for August 24-25**

We'll make announcements closer to the date, we plan to have a list available of the sale locations so shoppers can find you. There will also be selling space in and around the park pavilion.

Contact NLRecreation03@gmail to be added to the seller list, or to help us plan it.

### **Outdoor Movie Night at the Shatford Pavilion:**

**Date and Movie TBD**

Email your favorite movie to: [nlrecreation03@gmail.com](mailto:nlrecreation03@gmail.com) Popcorn and soft drinks will be provided.

We hope to see everyone at an event this year!

## News from New Lebanon Senior Reps

We have three Office of the Aging Representatives for New Lebanon and we are working together to assist the eligible population of New Lebanon to know about the benefits available to them through the State, County, Town and their neighbors. Please see our contact information below.

Contacts: David Russell: Chair - 518-794-0273 [nlrepcco2@gmail.com](mailto:nlrepcco2@gmail.com)  
Sarah Conly - 518-794-0423 [nlrepcco4@gmail.com](mailto:nlrepcco4@gmail.com)  
Mary Young - 518-794-7538 [nlrepcco3@gmail.com](mailto:nlrepcco3@gmail.com)

We are updating our list of residents over the age of 55 with name, address, phone number and email address in order to notify you of programs available to you and to be able to check on you in an emergency. Please email Sarah or call at the above number if you would like your name added to our list.

The State, County and Town offer programs to us to assist in maintaining our health, independence and home. Columbia County has the third oldest population in the State of New York with the numbers rising every year. We are a rural community with limited public transportation and many of our residents do not drive. We have programs to assist you to get services, groceries and to appointments as well as services which come to you. This section of the newsletter will provide you information about those programs and how to participate. Here are some programs you may be interested in:

HEAP, STAR and FOOD DISTRIBUTION: These are programs available to our seniors. See sections of this newsletter for more information. Contact any of your reps above for assistance applying.

MEALS ON WHEELS: Are you over the age of 60 and homebound and find it hard to prepare a meal? If you are please contact 518-828-4258 and ask to be set up for meal delivery. Meals are provided Monday through Friday and a meal to set up for yourself on Sat and Sun. The meals are delivered to you by neighbors who have signed up to deliver. They usually come between 11 and 12:30 pm the driver will tell you about snow days and what to do. This program is available year-round.

All of the representatives for the Office for the Aging, the town board of New Lebanon and its residents are here to provide support for any of our seniors who need it. We offer many services that are tailored to the needs of our seniors which are meant to help keep you safe, healthy, and happy. We provide you with peace of mind by offering daily in-home security calls from the Columbia County Sheriff Department. Seasonally, we offer double the amount of farmers' market coupons for fresh, local fruits and vegetables. On the other hand, we offer home weatherization and support through the Home Energy Assistance Program to keep you warm during our northeast winters.

---

## News from the CC Office of the Aging

Greetings from the Office of the Aging in Columbia County. The Office is busy developing the programs for 2024. One of the first is the 2024 Senior Volunteers for Columbia County. These seniors are Mr. and Mrs. Patrick and Eileen Maloy from Hudson. They volunteer in a variety of activities, they drive for Meals on Wheels, Pat coach's various sports programs for the Hudson Youth Program. Their love of children shows in the volunteering they do within the Hudson City School districts. Eileen is active in her church and the community Theatre Arts projects. They will be honored at a ceremony on May 14, in Albany.

Spring is on the way but many of you may still need assistance to pay for heat or air conditioning. HEAP has been extended, see your fuel provider, or call the Office of the Aging at 518-828-4258.

## News from the CC Office of the Aging (Continued)

Are you interested in finding programs, fun events and special articles designed to make your life easier. Sign up for the Senior Scoop, a magazine that gives you all this information and more. You can receive it via the mail or email or find it on the Office of the Aging Web site. Call the office to sign up.

Do have trouble making yourself or you and your spouse a nutritious meal every day. Why not join your friends and neighbors in getting lunch every day from the Meals on Wheels program. A dietician will design you a meal plan based on your dietary restrictions. The meals arrive warm with dessert, condiments, and a variety every week. They are available for weekends as well, just ask. Call 518-828-4258, leave a message and someone will get back to you. Your meals are delivered Monday through Friday by your neighbors.

Do you or someone you know need personal care assistance? Office of the Aging has programs to help you with just that. Call 518-828-4258 and leave a message about your need and someone will call you back regarding the programs available to you.

The Columbia County Sheriff's Office has programs to keep you safe, they will give you a call every day to check on you and they have a Yellow dot program whereby you place a yellow dot on your car and the door you enter your house by. This dot lets first responders know that you have information in your glove compartment and or freezer about your health, medications, doctor and who to call for you. This is especially helpful if you are unconscious or confused and keeps you from having to find that information when you need help. Both programs are free. Contact the Sheriff's department at 518-828-0601 ext. 1402. Do you use Farmer's Market coupons to save on vegetables during the summer? These coupons will be available hopefully by July, watch for the press release when they will be available.

Have a safe and fun filled summer,

Your Senior representatives David Russell, Sara Conly, Mary Young

---

## News From The New Lebanon Conservation Advisory Council (CAC)

### **Shatford Park – Trees for Tribs – A Work In Progress:**

We encourage you all to please come to the park and enjoy the new path that is gloriously woven through the plantings and imagine that soon a lot of important shade will be provided there. At some point flowers will fill in between the trees, tubes will come off, and the area will continue to look really pretty and welcoming.

### **What Is With All the Tubes in Shatford Park?**

The tubes allow in light and air and water. They are also the best and most economical way to ensure growth and survival of all the plants. They are a necessary part of allowing these very very small specimens to grow big enough to un-tube and stand on their own. Last year we tried taking a few tubes off and staking the larger plants and most of those broke and died since they were just not big enough.

### **The Tubes Just Sit There and Look Like Nothing Is Happening with Them. Is Anyone Caring for Them?**

All the tubes are picked up at least twice a year, and usually three times a year. The plants are checked for debris, weeds and pests that are removed and the tubes reseated. We have several super volunteers who

## New Lebanon Conservation Advisory Council (CAC) (Continued)

make sure they are all okay and who check on them. These folks repair broken stakes and reseal tubes as needed. Usually there is someone working on the plants at least twice a month, if not more. Volunteers assessed and fixed storm damage recently and will start mulching as soon as the threat of frost is over. Mulching all the plants happens two times a season, with other fixes happening as needed.

### **Why Are All of These Plants Needed in the Park?**

These trees and shrubs are part of a statewide effort called Trees For Tributaries (T4T) through the NYS Department of Conservation (NYSDEC) and Hudson River Estuary Program. Our little tributary is actually very long and its water all dumps into the Hudson River eventually.

### **The goals of T4T include:**

- to slow down and filter run off, preventing pollutants from getting into the water;
- to intercept and slow water from heavy rains, reducing the instances of flooding,
- to shade streams, creating cooler temperature conditions to support fish species such as trout;
- to hold soil in place, preventing streambanks from eroding away during heavy rains;
- to provide food and habitat for invertebrates, fish and birds and other wildlife providing carbon sequestration in roots

Due to people's love of seeing water and playing in water, there are many streams that feed the Hudson River that are in the same totally open and vulnerable condition as our little tributary stream in Shatford Park. T4T has been very successful repairing the stream banks in many locations.

### **Why Do Plants Help with Erosion and Pollutants?**

Roots. Lots of deep roots. If you look at the parts of the stream that are closer to the Town garage or closer to the High School, you will see thick, dense natural plantings of shrubs and trees holding the stream banks with very little erosion. This is what a true healthy buffer should be. The roots protect the soil from moving away with water, as well as grabbing pollutants and holding onto them, preventing them from entering the stream. Many birds and insects thrive there as well.



The part of the stream where we planted the T4T trees and shrubs in Shatford Park is mostly land fill and was clear cut to create the park. The stream was also moved from its original location. There has been substantial erosion over the past 3 years due to the beaver dam break and, more importantly, the large amount of rain and runoff heading downstream over the past year. The expectation is we will continue to see more rain in the coming years.



## New Lebanon Conservation Advisory Council (CAC) (Continued)



Near the wooden bridge that crosses the stream you will notice tubes with trees and shrubs that have resisted the flooding and are protecting the banks in that area. There are also some shrubs at streamside that are standing firm and holding the erosion. (see accompanying photos taken on the foot bridge in both directions which show a true buffer intact near the foot bridge in the park; compared to the photo with all the tree tubes showing open buffer with a large amount of erosion).

Near the road bridge at the park entrance you will notice substantial erosion of both banks, in part because of the landfill composition of those banks and the inability to plant trees close to the water.

### **But Why Are the Plants Spread Out So Much or Clustered Together in Groups?**

When the T4T were planted in 2021, we responded to the desire of many folks in town to see the stream driving by, or to see it and access it when walking by the stream when in the park. We made the decision to spread out the original plans for the T4T plants. The idea being that all those roots would likely help with erosion and limiting road pollution.

We received 500 tree and shrub seedlings and planted about 375. We chose to cluster as many as we could near the water while leaving some open space. We spread some out further from stream hoping they would still do their job of dense root growth. We are waiting to see how this plan works and are continually re-evaluating. It may be that more erosion control will be needed. The idea is that trees and shrubs will allow more streamside access over large rocks and boulders that may in fact be needed to stem erosion.

Again, please come and enjoy the park. We hope you will consider the amount of time and effort that has gone into this project and how lovely it will soon be. We welcome help and input and value ideas to make the project better. Last year alone the CAC volunteers put in dozens of hours in the park and all totaled the volunteers from the CAC and the town have put in hundreds of hours. Right now we are focused on keeping what is planted alive, and also finding places for those remaining plants in the nursery. The work is 100% manual labor since we do not have any machines to help load and move dirt and mulch and we have no watering truck.

Please consider volunteering! People can work on their own on the own schedules.

The CAC totally welcomes comments, ideas and assistance! Please reach out to [nlcac.munves@gmail.com](mailto:nlcac.munves@gmail.com) if you want to help out in the park.

### **Update on Water Testing for the New Lebanon Drinking Water Source Protection Plan:**

To date the CAC has conducted almost 80 well water tests for residents all over town, including the Rte 20/22 corridor. This spring we will be testing a few dozen more folks.



## New Lebanon Conservation Advisory Council (CAC) (Continued)

Past updates have shared some of the aggregate results that show an above average percentage of coliform and E.coli in the wells tested on the Rte. 20/22 corridor. This is very important information to have since there are some things that will need to be addressed there and we are figuring out the best way to do so.

The good news is that information is power – for example, the bacteria levels found on the Rte. 20/22 Corridor are rather easy to deal with. If “shocking” the well doesn't work after retesting, then something that should be considered is installing a UV filtration system. This type of filtration system should eliminate the bacteria.

Currently the town has hired Lamont Engineering for a feasibility study for wastewater and muni water. The CAC is working on a joint Committee with the Business and Economic Development Committee (BEDC) to assist in the study. We will be doing more water testing and other tasks to complete the feasibility study.

We had excellent attendance of over 35 people at our Water Talk in February at the New Lebanon Library. Big thanks once again to Michelle Hoffman at the Library and the speakers from the NYSDOH Martin and Braden, and MJ from NY Rural Water. We have a video of that talk which has been shared with residents on Facebook and the town website – please email Peg if you want that link or more information about water testing: [nlcac.munves@gmail.com](mailto:nlcac.munves@gmail.com)

Please reach out to us if you want to have your water tested and especially if you are having concerns. We are at the very beginning of this study and we will continue to update residents as we learn more about keeping our town water resources safe.

---

## Climate Smart Communities Task Force Update

During Earth Week in April, the DEC officially announced that New Lebanon had attained the Silver level in the Climate Smart Communities program. Only 6 other towns/cities in New York State have achieved this status. We had to complete actions that totaled at least 300 points. We submitted 353 points and the DEC approved 337 points. Many of the actions were for energy saving programs like installing heat pumps and solar panels at Town Hall that not only reduce our carbon footprint but save taxpayers money.

One of the tangible outcomes of achieving the Silver level is the points it gets the town in CSC partner NYSERDA'S Clean Energy Communities program which is also points based. We now qualify for a \$175,000 grant that can be used for other energy and cost savings projects on Town buildings. More on that at future Town Board meetings.

Thanks to all the CSC volunteers who have worked on projects of their choosing that helped us get to the Silver level. And special thanks to our advisor extraordinaire, Marc Anthonisen, Cornell graduate student, Michelle Parks who helped in the compilation and filing of the docs needed to qualify and Alejandra Plaza Limon, another former Cornell grad student who produced an excellent report of our work that helped put us over the top. And special thanks to Professor Rebecca Morgenstern Brenner from Cornell who provided the students and valuable guidance. Our work over the last 4 years has shown what a small rural community could achieve to help adapt to and mitigate Climate Change. But the bottom line is we couldn't have gotten this far without the foresight and support of Supervisor Houghtling who started this

## Climate Smart Communities Task Force Update (Continued)

process when she was Town Clerk and solicited the approval of the past and current Town Boards. So, thanks to them and all our neighbors who cheered us on!

The call to “Reduce, Reuse, and Recycle” may have sounded like a tall order back in the 1970’s, when Americans were realizing that the nation’s air and water quality needed attention and the phrase was first adopted. It turns out, however, that following the “3 Rs” is really just a matter of changing habits.

The Climate Smart Communities Task Force looks for ways for residents to change some habits. For instance, instead of dumping food waste in the trash, where it creates methane, you can deposit them in a bucket in the recycling center on West Street, (route 5A, off Rt 22) open on Wednesdays and Saturdays, 8 to 11:45AM.. A recycling sticker is not necessary to bring food waste to this location.

Instead of throwing out an old bike, you can bring it to Shatford Park on May 18th, where a team of experts can bring it back to life for free, either for you to use or to donate to someone who needs it.

And there are more opportunities to practice the 3R’s conveniently:

- bring your dead batteries to one of the 6 boxes around town where a volunteer will collect them and send them to be recycled (more than a 1000 pounds of them kept out of the landfill already.)
- bring your clean plastic film bags to the large carton at Town Hall for recycling (more than 300 pounds have been recycled so far.)
- bring your old clothes and toys to the Free Store, located in the old Lebanon Valley Protective Association on Route 22. While there, find some “new” clothes for yourself and your family.

On April 20, residents turned out to celebrate Earth Day by reducing the Town’s roadside trash. We met at Shatford Park, donned vests and gloves, and proceeded to clean up selected sections of road before coming back for refreshments donated by Maverick’s and a sense of a job well done.

---

## A Message from the Assessor

The Reassessment is complete. Everyone should have received their notices. We only had a couple Informal reviews. The Tentative Roll will be published May 1. Grievance Day is held on May 29th this year. Those seeking more information on this and any other Assessment related business should check the Assessors page of our website. It is filled with useful information.

Kimberly Smith, Assessor  
Town of New Lebanon  
518-794-8875

# New Lebanon residents!



**1**

## EMAIL

Request to be put on the **Town Email List**

Get all town board meeting agendas, minutes, and other important documents and updates.

email:  
townclerk@  
townofnewlebanon.com

**2**

## FACEBOOK

Join the **Town Facebook** page

Get the official word on what is going on in Town.

Facebook.com/groups/  
NewLebanonNY

**3**

## WEBSITE

Check out the **Town Website**

The home page has a calendar of events and a running list of current news.

townofnewlebanon.com



# THE COMMUNITY CENTER



*Town of New Lebanon*  
*(Old Firehouse Rte.20)*



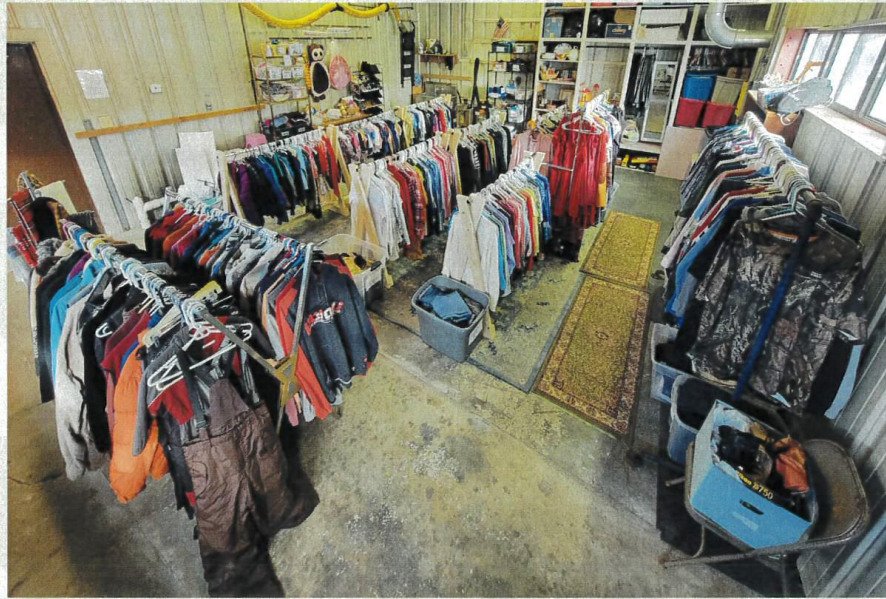
*Come On Down*  
*Unwind, Have Fun, &*  
*Make New Friends!!*



## HOURS OF OPERATION:

Tuesday's 6:30pm-8:30pm  
Thursday's 5:00pm-8:00pm  
**Saturday's 4:30pm-8:30pm**

**Sponsored by the WBH PTA**



## **NEW LOCATION & LARGER FREE STORE!!**

### **OPEN HOURS:**

**TUESDAYS 6:30PM – 8:30PM**

**WEDNESDAYS 12PM – 5PM**

**THURSDAYS 5PM – 8PM**

**SATURDAYS 4:30 PM – 8:30 PM \*NEW HOURS**

**SUNDAYS 11AM – 2PM**

**LOCATED AT THE LVPA BUILDING AT 523 US ROUTE 20, NEW LEBANON**

**DONATIONS CAN BE DROPPED TO THE FREE STORE DURING OPEN HOURS OR  
TO TOWN HALL MON, WED, TH & FRI FROM 9AM – 5PM & TUES 9AM – 2PM**





# Downsizing AND Decluttering

*You Can't Take it With You*

A PRESENTATION BY  
ALEXANDRIA DOUGLAS-BARTOLONE

It's time to clear the clutter!  
99 things to get rid of right now without ever missing!  
Know exactly what things to throw away to instantly  
declutter your home.

CANAAN CONGREGATIONAL CHURCH  
MAY 2ND  
10:30AM





ALL  
WELCOME!!

ALL  
WELCOME!!

# COMMUNITY DINNER

Thursday May 2<sup>nd</sup>

6:00pm-7:30pm

Old Fire House Rte. 20

*Pulled Pork Sandwiches & Sides*

In Conjunction With

*The New Lebanon Community Center*

&

Prepared By

*The Jr./Sr. High School Club*

*JUST FOOD*

**COLUMBIA COUNTY  
HOUSEHOLD HAZARDOUS WASTE  
COLLECTION DAY**

**SATURDAY, MAY 4, 2024**

**8:00AM – 12:00PM**

**LOCATION:** Columbia County Fire Training Center  
Columbia County Commerce Park  
**50 GRANDINETTI DRIVE, GHENT, NEW YORK**  
**ENTRANCE AT ROUTE 66 (BENDER BLVD.)**

**WHAT DO I BRING?**

**From the Workbench:**

Latex Paint, Oil Based Paint – **DO NOT  
BRING EMPTY OR HARDENED PAINT**  
Stains & Varnishes  
Wood Preservatives  
Solvents Adhesives  
Lighter Fluid

**From the Garage:**

Fuels, Gasoline, Kerosene  
Antifreeze  
Engine Degreasers  
Brake Fluid  
Carburetor Cleaner  
Car Wax, Polish  
Roofing Tar  
Driveway Sealer  
Swimming Pool Chemicals

**From the Yard:**

Poisons, Insecticides, Fungicides  
Chemical Fertilizers  
Weed Killers  
Moth Balls  
Flea Control Products, Pest Strips  
Aerosol Cans – **NOT EMPTY**

**From the House:**

Rubber Cement  
Fiberglass Resins  
Photo Chemicals  
Chemistry Sets  
Furniture Polish  
Floor & Metal Polish  
Oven Cleaner  
Drain & Toilet Cleaner  
Rug & Upholstery Cleaner  
Hobby & Art Supplies  
Spot Remover

**WHAT NOT TO BRING:**

**EMPTY CONTAINERS  
EMPTY PAINT CANS  
EMPTY AEROSOL CANS  
Radioactive Waste  
Commercial/Industrial Waste  
Agriculture Waste  
Fire Extinguishers  
Infectious & Biological Waste  
Prescription Medicines  
Syringes  
Asbestos  
Ammunition, Explosives, Fireworks  
Non-contaminated MOTOR OIL, Antifreeze  
NO 55 GALLON DRUMS**

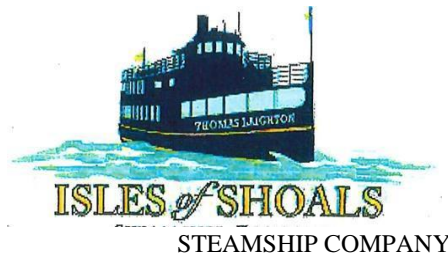
**RESIDENTS WITH LARGE QUANTITIES MUST CONTACT  
THE ADMINISTRATIVE OFFICE AT 518-828-2737 PRIOR TO PARTICIPATING.**

**NO CHARGE FOR COUNTY RESIDENTS. PROOF OF RESIDENCY WILL BE REQUIRED.**

THANK YOU FOR YOUR PARTICIPATION!



# Lebanon Valley Seniors



Isles of Shoals/ Foster Clambake, York Maine

**June 27, 2024**

**\$70 per person**

**7:30am** Depart Stephentown Post Office **7:45am**

Depart St Joseph's Immaculate Conception

**732** US Route 20, New Lebanon, NY 12062 **11:15 am**

Arrive Foster's Clambake, York, ME **11:45am** Lunch is served. (Menu on 2<sup>nd</sup> page) **1:00pm** depart for Portsmouth, NH

**1:30pm** board the boat for

Historic Isles of Shoals & Portsmouth Harbor Cruise **4:45pm** return to the dock

**Checks payable to New Lebanon Seniors Please  
mail to Cathy Shuhart  
317 Hanky Mull Hill Road E  
Nassau, NY 12062**

**Lebanon Valley Seniors and New Lebanon Residents have priority.  
Your seat is not reserved until paid in full and maximum 38 people per trip.  
Any question please email: LebanonSeniorCitizens@gmail.com**

**Lebanon Valley Senior Citizens**



**Newport Playhouse & Cabaret**

**August 12, 2024**

**\$86.95 per person**

**7:00am Depart Stephentown Post Office**

**7:15am Depart St Joseph's Immaculate Conception**

**732 US Route 20, New Lebanon, NY 12062**

**11:00am Doors open.**

**11:30am Lobster Fest buffet (see second Page)**



**"Nonsense: A Musical!"**

**Enjoy a great buffet, a funny play & a fun-filled cabaret!**

**Drive by the Newport Mansions on Ocean Drive as departing.**

**Checks payable to Lebanon Valley Seniors**

**Please mail to Cathy Shuhart**

**317 Hanky Mull Hill Road**

**E Nassau, NY 12062**

**Lebanon Valley Seniors and New Lebanon Residents have priority.**

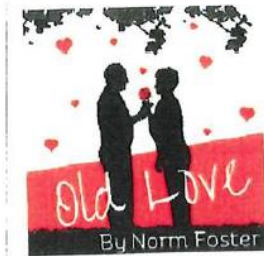
**Your seat is not reserved until paid in full and maximum 38 people per trip.**

**Any question please email: LebanonSeniorCitizens@gmail.com**



Lebanon Valley Seniors  
Lake George Dinner Theatre  
& Mohican Lakefront Cruise  
September 19, 2024  
\$94.50 per person

8 :00am Depart Stephentown Post Office  
8: 15am Depart St Joseph's Immaculate Conception  
732 US Route 20, New Lebanon, NY 12062  
9:45am arrive Lake George  
10:00am -11:00am board Mohican Steamboat to Sail  
Fall Mohican Lakefront Cruise  
1 1 :15am Lake George Dinner Theatre  
TO SEE:



Checks payable to Lebanon Valley Seniors  
Please mail to Cathy Shuhart  
317 Hanky Mull Hill Road  
E Nassau, NY 12062

Lebanon Valley Seniors and New Lebanon Residents have priority. Your seat is not reserved until paid in full and maximum 38 people per trip.  
Any question please email: [LebanonSeniorCitizens@gmail.com](mailto:LebanonSeniorCitizens@gmail.com)

**Entrée Choices:**

Chicken Francaise  
Faroe Island Salmon  
Center Cut Bone in Pork Chop Pasta Primavera  
All include Salad, Warm Rolls, Ultimate Chocolate Cake  
Coffee or Hot Tea

Please indicate your choice of Entrée when you sign up for trip

## 2024 Summer Youth Program

Full registration packets can be picked up at the Town Hall or found on the Town website at <https://townofnewlebanon.com/summer-youth-program/>

**REGISTRATION DEADLINE: June 7<sup>th</sup>**

**July 1st - August 23<sup>rd</sup>**

**8:00 a.m. to 4:00 p.m., Monday – Friday**  
at Shatford Park Pavilion, Old Post Road, New Lebanon, NY

Open to:

Children registered for Kindergarten through and including age 13

### Registration Fees:

Fees are determined by residency and the number of children per family participating in the program. There is a discount given to all families that pay IN FULL before June 7<sup>th</sup>. All payments are due IN FULL before June 28<sup>th</sup>.

Please see page 27 of the newsletter for all registration fees!

## *Activities*

Crafts	Board games	Cards	Puzzles	Legos
Tennis	Basketball	Soccer	Playground	Bike Day
Softball	Volleyball	Ping Pong	Kickball	Art
Football	Theater			
Capture the Flag	On-Site Presentations	Team Building Activities		

# REGISTRATION DEADLINE: June 7<sup>th</sup>

## HOW TO REGISTER:

1. Complete one registration form for each child;
2. Obtain a copy of your child/children's immunization records;
3. Review *Program Important Policies & Procedures* and sign acknowledgement on page 5 (one per family);
4. Complete one medical authorization for each child.
5. Make registration fee payable to *Town of New Lebanon*; and
6. Submit all 5 items (registration form, registration fee, immunization record, signed *Program Policies & Procedures* acknowledgement and signed medical authorization) on or before June 7<sup>th</sup> to:

New Lebanon Summer Youth Program  
P.O. Box 328  
New Lebanon, N.Y. 12125

If you would like to make payment arrangements and pay monthly or weekly in advance of the program, please contact Robert @ 413-494-0691.

You may pay the registration fee as late at June 28<sup>th</sup> but will not get the discounted rate – you still MUST have the other 4 items in by June 7<sup>th</sup>

### What to bring:

- Bag Lunch (Free Meals will be provided for all campers as an option)
- Hat with a brim
- Sunscreen/Sunblock
- Sneakers & Socks (children wearing inappropriate footwear will not be allowed to participate in daily sports activities/games)
- Water bottle

\*\*Please leave all electronic devices and cell phones home \*\*

If you have questions, please contact Robert Long, Camp Director @ 413-494-0691 or [syp@townofnewlebanon.com](mailto:syp@townofnewlebanon.com).

Have you completed all necessary forms?  
Have you submitted immunizations records?  
Have you submitted the appropriate fees?  
**Incomplete applications will not be accepted!!!!!!**

## 2024 Summer Youth Program Rates

### **Early Registration Fees** (if final payment is received by June 7<sup>th</sup>):

#### Resident (Town taxes paid to New Lebanon):

1 child	\$384/season
2 children	\$576/season
3 children	\$706/season
4+ children	\$802/season

#### Local Non-resident (Town taxes not paid to New Lebanon, School taxes paid to NLCSD):

1 child	\$810/season
2 children	\$1,200/season
3 children	\$1,620/season
4+ children	\$1,920/season

#### Non-resident (Town taxes not paid to New Lebanon; School taxes not paid to NLCSD):

Per child	\$1,620/season
-----------	----------------

### **Registration Fees** (if final payment is received after June 7<sup>th</sup> – MUST be received in full by June 28<sup>th</sup>):

#### Resident (Town taxes paid to New Lebanon):

1 child	\$600/season
2 children	\$900/season
3 children	\$1,102/season
4+ children	\$1,252/season

#### Local Non-resident (Town taxes not paid to New Lebanon, School taxes paid to NLCSD):

1 child	\$1,013/season
2 children	\$1,500/season
3 children	\$2,025/season
4+ children	\$2,400/season

#### Non-resident (Town taxes not paid to New Lebanon; School taxes not paid to NLCSD):

Per child	\$2,025; and
-----------	--------------

\*\*Weekly rates are available – to calculate the weekly rate, take your relevant season cost above, divide by 8 and multiply by 2\*\*

\*\*THE TOWN OF NEW LEBANON SUMMER YOUTH PROGRAM IS NOW PARTICIPATING WITH THE LEBANON VALLEY COMMUNITY CORPORATION (LVCC), AN INDEPENDENT NON-PROFIT IN NEW LEBANON. THE LVCC IS RAISING MONEY TO SUPPORT CHILDREN IN NEED WHO WANT TO ATTEND THE 8-WEEK SUMMER YOUTH PROGRAM AT SHATFORD PARK FOR 2024. APPLICANTS MUST PROVE FINANCIAL NEED BY SHOWING PROOF THAT THEY RECEIVE SNAP BENEFITS. DEPENDING UPON MONEY RAISED, THE LVCC WILL SUPPORT ALL OR PART OF EACH APPLICANT'S SYP FEES. IF YOU BELIEVE YOU FIT THIS CRITERIA, PLEASE EMAIL: [ERMINIA@LEBANONVALLEYCC.ORG](mailto:ERMINIA@LEBANONVALLEYCC.ORG). \*\*

## From the SYP Camp Director

The Town of New Lebanon Summer Youth Program is looking for Camp Counselors who are 16 and over! Please contact Camp Director, Robert Long at [syp@townofnewlebanon.com](mailto:syp@townofnewlebanon.com) or 413-494-0691 to request an application or for any questions. See the notice below:

### **TOWN OF NEW LEBANON JOB POSTING ASSISTANT SUMMER CAMP DIRECTOR, COUNSELORS & CITs**

The Town of New Lebanon is accepting applications for the positions of Assistant Summer Camp Director, Summer Camp Counselors and Counselors in Training. These positions assist in running an 8-week summer camp which runs 5 days a week from 8am – 4pm, with up to 100 children at Shatford Park.

#### **Counselor-in-Training**

##### **Job Description:**

**To assist Camp Counselors and Camp Director with set-up and facilitation of daily camp activities.**

##### **Requirements:**

**Must be at least 15 years old by the start of camp July 1st.**

**Must be comfortable in working with young children.**

**Must be flexible to work with multiple groups throughout the day as needed.**

**Previous camper experience a plus.**

**This is an 8 week program that runs from July 1st to August 23rd.**

**Monday to Friday 8am-4pm.**

**Pay: \$10.30/hour**

#### **Camp Counselor**

##### **Job Description:**

**Direct and supervise children in assigned daily activities. Initiate designated group play and engage with children in a positive manner. Be available to participate with children in designated special camp events and off-site field trips. Handle basic problem resolution and discipline of camp attendees should they arise. Work with and monitor Counselors-in-Training performance while in a group setting.**

##### **Requirements:**

**Must be at least 16 years old by the start of camp July 1st.**

**Must be comfortable in working with and supervising young children.**

**Must be flexible to work with multiple groups throughout the day as needed.**

**Previous experience as a camper and/or position supervising children in a camp setting is highly preferred.**

**This is an 8 week program that runs from July 1st to August 23rd.**

**Monday to Friday 8am-4pm.**

**Pay: \$13.54/hour (\$14.54/ hour with CPR and 1<sup>st</sup> Aid Certification)**



## Assistant Camp Director

### Job Description:

To assist the Camp Director in the planning and implementation of daily camp activities, special events, and off-site field trips. Provide a positive supervisory presence to all counselors, counselors-in-training, and camp participants on a daily basis. Be comfortable in identifying and addressing any issues that may arise and handling any disciplinary actions as needed. Assists the Camp Director in maintaining all necessary state and local paperwork required for the operation of camp.

### Requirements:

- Must be at least 17 years old by the start of camp July 1st
- Administrative or supervisory experience in camping or children supervision
- Ability to supervise and assign responsibilities to counselors and CITs
- Ability to take and pass designated CPR class before the start of camp.
- Ability to pass required state background checks required for camp employment.

This is an 8 week program that runs from July 1st to August 23rd.

Monday to Friday 8am-4pm.

Pay: \$17.30/hour

Interested applicants for any of the positions must send a letter of interest and a resume to be received no later than 4pm on Friday 5/10/2024 to:

New Lebanon Town Clerk

PO Box 328

New Lebanon, NY, 12125

Or via email to: [townclerk@townofnewlebanon.com](mailto:townclerk@townofnewlebanon.com)

Marcie Robertson

Town Clerk

4/12/2024

**Do You Need Help For A Loved One?**

**NY CONNECTS, COLUMBIA COUNTY** is a program that assists with finding long term services and supports for the elderly as well as children and adults with a disability.

**NEW YORK STATE OF OPPORTUNITY** | **NY Connects** Your Link to Long Term Services and Supports

of COLUMBIA COUNTY

CALL 518 828 2273 1-877-260-9244

COORDINATED BY **Healthcare Consortium** A collaborative rural health network connecting across the health care continuum  
www.columbiahealthnet.org

**NY CONNECTS, COLUMBIA COUNTY** provides **INFORMATION** about services currently available, such as home care, transportation, home delivered meals, counseling and support, housing options and more.

**NY CONNECTS, COLUMBIA COUNTY** provides **REFERRALS** to agencies that may help in the care of your loved one. The NY Connects staff can assist with these referrals, avoiding duplication of efforts.

**NEW YORK STATE OF OPPORTUNITY** | **NY Connects** Your Link to Long Term Services and Supports

of COLUMBIA COUNTY

CALL 518 828 2273 1-877-260-9244

Health Care Consortium

Rachel Cole

(518) 822-88820 Ext 308

[rcole@columbiahealthnet.org](mailto:rcole@columbiahealthnet.org)

Consumer Assistance Programs  
Coordinator

Did you know Rachel is at the New Lebanon Library the third Thursday of each month from 1pm-4pm? It is recommended, to call ahead and make an appointment.

## Meeting Dates

PLEASE TAKE NOTICE of the meeting dates, times and locations for the Town Board Meetings, Other Board Meetings and Committees.

**The Following will be meeting at the Town Hall, 14755 State Route 22, New Lebanon, NY and live streamed at: [https://townhallstreams.com/towns/new\\_lebanon\\_ny](https://townhallstreams.com/towns/new_lebanon_ny)**

Town Board meets the second Tuesday of each month at 6:00pm

Planning Board meets the third Wednesday of each month, as necessary, at 7:00pm

Business & Economic Development Committee meets the first Monday of each month at 6:30pm

Zoning Re-write Committee meets the third Monday of each month, as necessary, at 7:00pm (changed to quarterly in June, but will meet as needed on the 3<sup>rd</sup> Monday )

Conservation Advisory Council meets the second Monday of each month at 6:30pm

Climate Smart Communities Task Force Committee meets the first Wednesday of each month at 6:30pm

Quality of Life Committee meets the fourth Friday at 9:30am

The Board of Ethics meets the third Monday of each month, as necessary, at 12pm

Playground Design Committee meets the first Tuesday of each month, at 6:30pm

**The Following will be meeting at the Town Hall, 14755 State Route 22, New Lebanon, NY:**

Zoning Board of Appeals meets the first Tuesday of each month, as necessary, at 7:00pm

Recreation Commission meets the third Tuesday of each month, as necessary, at 6:30pm

Outreach & Marketing Committee meets the fourth Tuesday of each month at 10:00am

**The Following will be meeting at the Lebanon Valley Fire Department (LVPA), 523 US Route 20, New Lebanon, NY:**

Lebanon Valley Senior Citizens meet the first and third Fridays each month at 1:00pm

---

## Calendar Of Events

NY Connects Presentation – Canaan Congregational Church – Downsizing & Decluttering - Thursday, May 2nd, 2024 @ 10:30am

Community Dinner – New Lebanon Firehouse (old one) – Thursday, May 2nd, 2024 @ 6:00pm – 7:30pm

Columbia County Household Hazardous Waste Collection Day – Ghent, NY – Saturday, May 4th, 2024 @ 8:00am – 12:00pm

May Regular Town Board Meeting - Tuesday, May 14th, 2024 @ 6:00pm

2 Year Delay & Food Truck Night – Shatford Park – Wednesday, May 15<sup>th</sup>, 2024 @ 5:00pm

Columbia Repair Café – NL Library – Saturday, May 18th, 2024 from 10:00am-1:00pm

Climate Smart Communities Bike Clinic – Shatford Park – Saturday, May 18<sup>th</sup>, 2024

## Calendar Of Events (Continued)

Monthly Walk - Sunday, May 19th, 2024 @ 10:00am: Corkscrew Rail Trail

Spring Concert – NL Jr/Sr High – Wednesday, May 22nd, 2024 @ 6:00pm – 7:30pm

Memorial Day Assembly Program & Veterans Brunch – NL Jr/Sr High – Thursday, May 23rd, 2024 @ 9:00am

Holiday – Memorial Day – All Town Offices Closed – Monday, May 27th, 2024

Memorial Day Parade – Shatford Park – Monday, May 27th, 2024 @ 8:30am (line up in Shatford Park)

American Legion Memorial Day Service – The Cemetery of the Evergreens – Monday, May 27th, 2024 - following the parade

Grievance Day – Wednesday, May 29th, 2024

Monthly Walk - Sunday, June 9th, 2024 @ 10:00am: Hand Hollow Conservation Area  
NL Summer Youth Program sign up deadline – June 7th, 2024 (for disc) – June 28th, 2024 (no disc)

Newcomers Event – Roaring 20's – Saturday, June 8th, 2024 @ 1:00pm

June Regular Town Board Meeting: Tuesday, June 11th, 2024 @ 6:00pm

Kiss Program Dates: June 17th – June 28th, 2024

Holiday – Juneteenth – All Town Offices Closed – Wednesday, June 19th, 2024

Monthly Walk - Monday July 3, 2023 at 10:30AM: Shaker Swamp – meeting location provided after RSVP

Holiday – Independence Day – All Town Offices Closed – Tuesday, July 4, 2023

Monthly Walk - Sunday, July 7th, 2024 at 10:00am: Sassafras Walk

July Regular Town Board Meeting: Tuesday, July 11, 2023 @ 6pm

Annual Community Picnic – Shatford Pavilion – Sunday, August 11th, 2024 from 12:00-4:00pm

Town Wide Yard Sale – Various Locations & Shatford Pavilion – Saturday, August 24<sup>th</sup>, 2024 & Sunday, August 25<sup>th</sup>, 2024 (more information to come)

Monthly Walk - Sunday, August 25th, 2024 at 10:00am: Shaker Swamp Walk

Newcomers Event – Roaring 20's – Saturday, September 14th, 2024 @ 1:00pm

Town Clean-Up Day – Saturday, September 7th, 2024 from 8am-2pm

Doug Banker Memorial Music in The Park – Shatford Pavilion – Sunday, September 15th, 2024 from 12-4pm

Outdoor Movie Night - Shatford Pavilion – Date, Time & Movie TBD

**TOWN OF NEW LEBANON TOWN CLERK**  
**P.O. Box328**  
**New Lebanon, NY 12125**