

## **Assessor**

The tentative roll was published on May 1st, and any Preliminary Assessments that have not been challenged through an informal review will now be considered Tentative Assessments. Anyone who provided the necessary information for an informal review, regardless of whether or not a change has been made, will be given a second notice.

We received fewer than 10 informal requests, which I believe is due to our ongoing efforts to inform the public of the process. We don't anticipate many formal grievances.

Individuals needing to file a Formal Grievance can do so before May 29th, which is Grievance Day. Detailed instructions and Form(s) can be found on the Assessors section of our website.

## **Building Department**

No report

## **Business & Economic Development**

We voted to recommend that the Town use up to \$3.5k of ARPA funds previously designated for child care to be used as matching funds for our water and wastewater engineering report. (The state is requiring a 10% match from the Town.)

## **Outreach & Marketing**

The new tourism brochure is printed and being distributed. The updated business directory went out with the May Town newsletter. We will be skipping our May meeting and meeting again on June 25<sup>th</sup> at 10am to put together new welcome packets with the new literature. A huge thank you to Erminia Rasmussen and Sharon Powers for volunteering to do all the work in compiling data and preparing these great new documents to support our local businesses by promoting tourism and asking residents to shop local!

## **CAC, Climate Smart & Environmental Management**

### **CAC:**

Trees for Tribs: All the plants are thriving and are being tended. However, over the past 3 years since the plants were put in, the bank of the Wyomanock stream has quickly eroded more than 6 feet. The planting project was seen as a way to stabilize/repair the stream bank. However, it is not able to truly stem the erosion due to the consistency of the flooding over the past couple of years. A meeting was held with Joanne Amlaw and Craig Skerkis to discuss the erosion issues. They were encouraged to talk to the Recreation Committee (Craig is now the Board liaison with the Rec Committee) and to talk to the TB about getting an engineering assessment of what it will take to preserve the stream bank. Information was shared on working with the NYSDEC on requirements for streambank erosion. Our CAC task is to continue to keep the plants alive and

well. The recent CAC article in the Town Newsletter highlighted the entire project and reason for why it is the way it is. As an advisory council, we will help the Town find solutions to continue this project. However we will not continue to permanently work in the park on this project. The CAC's main goal and work focus is keeping our water in town healthy and safe, including streams. We look forward to discussing options with the Town Board on what the best way forward is for Shatford Park and the plantings. We hope that in the larger master park plan there will be some good solutions to making the project more acceptable to residents and how maintenance will be done.

**Waste Water Feasibility Study:** With the Town Board's approval, the CAC is willing take \$3,000 from the CAC's water testing allocation to use for the additional matching funds to complete the Feasibility study. Since there will be additional water testing as part of the study the CAC believes this is a good use of the money. Note: Due to overlapping timelines on when this report is due, this is an item on the May 14 TB agenda so we await the word of the TB. This is a joint committee project with the NL BEDC and CAC.

**DWSP2:** To date about 80 water tests have been conducted by CAC members Donald Lamonaca and Peg Munves, and we just conducted another 11 tests with a few dozen more to go so far. NYRWA's Source Water Specialist retired and we look forward to working with our new Source water specialist so that we can continue making sure New Lebanon's drinking water is safe. Overall the town's private wells are in good health, although there are some occurrences of coliform showing up. When a well is positive, we recommend boiling drinking water and retesting in two weeks from the initial test and then we will make a recommendation for remediation as needed.

### **CSC:**

The New Lebanon CSC was officially informed that we achieved the Silver status on April 25 via a press conference in Schenectady and an announcement by the governor. At the same time, NYSERDA confirmed that the points we achieved by getting Silver, qualified New Lebanon for the \$175,000 grant for energy upgrades to town buildings. Projects that are being considered include upgrading the lighting and wiring and changing the insulation in the town garage as well as installing interior heat pumps and solar panels on the roof. Other projects potentially include lighting upgrades in Town Hall and a battery backup. All efforts will save taxpayers money. The goal is to get additional points from completing these actions that will qualify for another \$250,000 grant by Oct 1, 2024.

The CSC is offering a bike tune up day at the Shatford Park pavilion on May 18 from 10am-2pm. Residents are encouraged to bring their bikes and our trained mechanics will fix most issues. At the same time, our volunteers will be working a Repair Cafe at the New Lebanon Library from 10am-1pm. Come over with your broken appliances for free repairs!

Residents are reminded that almost anything edible can go in the community compost bucket located at the New Lebanon recycling center behind Berkshire Bank parking lot, open Wednesday and Saturday mornings. Because the contents of the bucket will be brought to Columbia County's powerful digester, you can put food waste in it that would not be advisable to put in a back-yard compost pile, such as meat and dairy.

### **EMC:**

I proudly Announced Silver Climate Smart for New Lebanon - lots of congratulations.

Some discussion about accounting for money received in state grants - seems each town handles in its own way.

Interest in how New Lebanon got money for water testing.

Shaker Swamp film to be shown on May 17 at 7 PM at Darrow Auditorium.

## **Fire, Law Enforcement & Emergency**

No report

## **Highway**

No report

## **Historian & LVHS**

### **Historian:**

I met with the following:

- Melba Kurman: regarding the Shaker Community and the Shaker Historic District;
- Glenn Fisher to discuss our research projects;

I received from Sharon Moon a donation to the town. A large notebook filled with photographs, letters, poetry and articles related to the Hull family and their home on Spring Hill Road, Lebanon Springs, N.Y. There is much history in the gift and I will enjoy reading through the materials. Sharon Moon plans on making a future donation from her archives on the Hull family.

I have renewed membership in the following organizations:

- American Historical Association;
- Columbia County Historical Society;
- Museum Association of New York
- National Council on Public History; and
- New York Archives

I have joined the Fenimore Art Museum which houses folk art, NYS Indigenous history, and items of New York State history.

I began to research the history of the New Lebanon library. Michelle Hoffman, library director, has been most helpful in assisting in the research. The end product will update the information located in the local history section of the library and eventually will be part of a new history of the Town of New Lebanon book.

### **LVHS:**

No report

## **Justice Court**

No report

## **Library**

No report

## **Buildings, Parks & Recreation**

### **Buildings:**

No report

### **Parks:**

No report

### **Recreation Commission:**

We had a delayed meeting last month, meeting on 4/30.

We went over planning and details for this year's schedule of events, and discussed a few more.

The ice rink has been dismantled thanks for Pete McCagg.

Our first event of the year will be Wednesday, May 15th, at 5PM - music in the park with the high school band. We'll have Notorious BITE as the food truck.

The 2nd will be a Corkscrew Rail trail walk led by Joe Ogilvie, meeting at the old Train Depot on Sunday May 19th at 10AM. Hope to see lots of the community there!

## **Seniors**

The seasons have changed and there is an influx of programs to help Seniors enjoy summer and to stay safe. The Office of the Aging in conjunction with the Seniors from Canaan and New Lebanon held a fall prevention program In April given by Albany Medical center Physical Therapy department. Changes in our bodies and the new risks associated with those changes were discussed and ways to stay safe in our home and community while engaging in activities. A treat bag containing many things to add to our home such as a night light were given away.

The Canaan Seniors in conjuncture with the Canaan and New Lebanon Fire Company gave a program about safety in our changing environment. Safety during snow and heat guidelines were identified. It was very appropriate as we had just had the severe windstorm, and our towns were the most severely impacted in Columbia County. They also gave away a knap sack which contained the beginnings of an emergency preparedness bag.

A program sponsored by the Office of the Aging and the Canaan Congregational church discussed downsizing and how to declutter our home. This coming month there will be a discussion about dying with dignity. Posters and the Web site will give dates and times.

The Office of the Aging has several programs available in person and online to help Seniors, Caregivers, and family members, see the Web site for dates and times.

New Lebanon Seniors have set their summer event calendar, see the Senior Section of the Town Web site for specifics or come and join. A new program is game afternoon, the first being 5/17 at 1pm, we will play Bingo. Also, on 5/17 the NLCS Chorus will give us a preview of their spring program at the high school. The chorus also provides a wonderful brunch after the music, you must sign up for this program at lebanonseniorcitizens@gmail.com.

## **Traffic Safety**

In addition to the written report below, please see graphs at the end of this document.

The Columbia County Safety Committee will be meeting on 5/23. The Town has submitted to New York State DOT a request to do a traffic study in area of the Speedway to determine what if any additional safety precautions can be place. The pedestrian crosswalk has been repainted and the Police have been seen stationed on Rt 20 to monitor the traffic flow while the spectators enter the Track.

With the closure of Route 22 this spring traffic patterns to traverse the New Lebanon area to get the other end of Rt 22 have caused many headaches as people used their GPS instead of following detour signs causing many roads to have an increase in traffic. One lane is now open to go north on Rt 22, with stop lights at the intersection where the culvert is being replaced. Hopefully, drivers will revert to using Rt 22 to head north.

DOT, NYSEG, Spectrum and Consolidated Technologies have been working continuously since the windstorm to cut trees, clean up brush and replace wires and guard rails. Thankfully, a lot of trees had already been trimmed or road closures would have worse. A big thanks goes out to our own Town Highway Department who worked through the night to reopen closed roads.

New York State DOT has filled in potholes on Rt 20, and our Town Highway Department is working on Town roads. See Highway supervisor report. Work is being started on RT 20 west from Rt 66 in Brainard to Rt 9 and 20 in Schodack.

The traffic trailer is out, and the reports are attached. Attached is also one from the County Sheriff that was done in March at the intersection of Old Gale Hill Road and County 9 S. As the Sherriff's office stated, they were working with the State Police to have an increased presence on County 9 during peak traffic times. Our trailer presently on County 9 N shows an increase in the traffic with a decrease since Rt 22 reopened.

## **Volunteers**

No report

## **Quality of Life**

We did not meet in April. Our next meeting is scheduled for May 24<sup>th</sup> at 9:30am.

# Zoning Re-write Committee Update

**Self Storage:** Members of the committee will meet with Town Board representatives to review the changes recommended by the Planning Board that were not adopted as part of Local Law #1 of 2024.

**Central Commercial District Workgroup:** Members of the committee will participate with other stakeholders to review which of the current commercial uses should be permitted in the proposed zone as well as any new uses.

**Telecommunications -** The ZRC, with input from the Building Department, compiled comments on the draft updated code prepared by Mr. Campanelli. The comments were provided to Mr. Campanelli and a meeting was held with him on May 8. Mr. Campanelli was very impressed with the comments provided by the Town. He accepted a significant portion of them. There were others that contained language where for legal reasons or based on his experience, he urged the Town to accept, which we agreed made sense. There remain certain discretionary areas, notably in the purely zoning realm (e.g., levels of approval, setbacks, height) to which he deferred to the Town. Donald and I will reconvene to draft those changes. It is Donald's and my assessment that there are no areas of disagreement between Mr. Campanelli and the Town and that the ongoing fine tuning of the draft is highly collaborative.

**Historic Preservation District -** Members of the ZRC are working with the Shaker Preservation Committee to develop a plan that addresses boundaries, uses and design standards.

**Chapter 101 Special Events -** There is some fine tuning needed. This has been drafted; this item is ready.

**Ridgeline, Hilltop -** Jim Carroll identified potential ridgelines to be protected. The next steps are to define buffers and develop regulations for what will likely be an overlay.

**Housing:** Members of the committee will be meeting with the Quality of Life Committee In June to determine potential needs to update the zoning code to address QOL committee housing priorities. The ZRC already identified a need to update the definition of "multiple housing" as the current definition precludes owner occupied units (e.g., co-ops, condos).

The committee is working on several other items, including:

- Breeding Kennel, Dog Boarding
- Garbage Cans - per Peter's request; a sample code from other towns is in hand.
- Cemeteries - the definition for this use needs updating. There may be a broader need to address family burials that the ZBA in effect determined fell outside the definition of cemeteries
- Interpretation - there is a need to strike the language in current code permitting the ZEO to request an interpretation as this has been determined to be contrary to NYS law.

# Community Center/Free Store Update

## Free Store:

We've got a nice number for the Free Store this month; 279. That's the head count from just 13 days. One Monday night, for the free pizza dinner, 4 Saturday evenings that Liz covered and our 8 Wednesday/Sunday hours. I don't have official Tuesday/Thursday numbers but I think it's safe to say we had well over 300 people stop by the store for the month of April.

Every area of the store has expanded. The kids section is especially jammed packed (neatly, of course) and the turnaround of merchandise is impressive. It's truly exciting to see things come and go so quickly. As always, everyone that comes through is appreciative and a bit amazed. We're doing good thing and it feels good.

Here's to another successful month of helping folks out.

### **Community Center:**

1. Pizza Party earlier in the Month had a great turn out of about 50 people.
2. Local Girl Scout Troop had 2 cookie sales during community center hours and generated a lot of traffic. The scouts stayed before and after the drives to hang out and have fun.
3. Planting Seed Workshop saw about 25 people come out and participate in the event.
4. Donation of a new video game machine has been a popular draw at the community center.
5. Snack donations from the community have also been a hit with people utilizing the center as well as the bottled water provided by the LVPA.

Total numbers for April 185. Highest month so far.

Off to a great start for May. Community Dinner was a big hit with close to a 100 people in attendance. Big Thanks to Brit and The Just Food Club.

Looking to do another similar Community Dinner June 13th from 6pm-7:30pm

Also will be starting a Bingo event with the Senior Club.

## **Shaker Preservation Committee**

No report

## **County Update**

No report

## **Depot Committee**

Guests, Monte Wasch and Gregg Carroll of the Lebanon Valley Community Corporation (LVCC) attended and offered information on the kinds of grants they could help us with, including grants for asbestos removal. Gregg shared a flyer about "smart bathrooms" that clean themselves, etc. as possible use for the Depot. Monte recommended the CRT hire a land use attorney.

The overhanging roof with pinholes still needs a temporary cover. Joe said by using a lift to reach the roof, the slate could be covered by material that looks like slate. Joe estimated that total cost would be \$1500. DOC member, retired from the NYSOHP, Debbie Gordon cautioned the National Registry status would be jeopardized by providing an incorrect type of roof cover over the slate.

Debbie Gordon knows of an engineering firm, Proper and O'Leary Engineering in Valatie that does foundations. She will call them and ask if they could look at the foundation and give an estimate and proposal for stabilization. She offered that they also do asbestos, black mold and lead removal. (After the meeting, the following morning, Debbie followed up by a phone call and left a message.)

The Corkscrew Railtrail Association met last week, and because the train depot is closed up, they decided to not do an asbestos survey at this time because they didn't want to spend the money. They do know if there is asbestos, they will immediately have to remove it, which would then lead to the offer by Gregg Carroll of the LVCC to help by applying for grant money to do it. I informed her the state DEC also has money to help pay for remediation.

The CRT is going to put up wooden fencing to mark the trail going around the Depot, but more to keep people from walking across the yard and tripping on the stumps and brambles. The fencing will be similar to a split rail. They're still figuring out a kiosk of some kind to install next to the Depot. I suggested they use the NAPA wood shelving that was torn out of the Depot walls.

I urged the CRT to get Cassidy in there first to clear the brush away and grind down the stumps in the yard before any kind of fencing is put up. The free fencing — constructed by Pete Libardi, retired from Todd Driscoll's Berkshire Fencing — will be removed when contractors come in to remediate toxins, and contractors who will do reconstruction/restoration work.

The Depot Oversight committee is putting together their list of requests for the town board to help finance, including Cassidy. Their estimate for Cassidy is \$4,000.

A fundraiser, being planned through the summer into early fall, is a movie series about trains. Michael Deegan, gave a list of train movies to Debbie Gordon, who emailed it to Corkscrew Railtrail head/ Depot Oversight head, Joe Ogilvie. The intent is to show a train movie on Thursday nights at 6pm, in the library or Shatford Park's pavilion, weather permitting, once a month, or maybe twice a month, for \$5/ person, children \$1 and \$1 for a bag of popcorn. The details regarding the fundraiser are being ironed out.



# Custom Report: My Custom Report

**Location:** Adams Crossing Road  
**Address:** Adams Crossing Road  
**Speed Limit:** From schedule 35 mph  
**Total Vehicle Count:** 3248

Report period: 2024-04-18 to 2024-04-25

### DATA COLLECTION TYPES

| Date/Time              | Total Vehicles Count | # of Speed Violations | # of Vehicles Respecting Limit | Average Speed(mph) | Maximum Speed (mph) |
|------------------------|----------------------|-----------------------|--------------------------------|--------------------|---------------------|
| 2024-04-25<br>23:30:00 | n/a                  | 0                     | n/a                            | n/a                | n/a                 |
| 2024-04-25<br>23:45:00 | n/a                  | 0                     | n/a                            | n/a                | n/a                 |
| Summary                | SUM: 3248            | SUM: 1206             | SUM: 2042                      | AVG: 26 mph        |                     |

Rows per page: 10 741-743 of 743

\* **H** - highest value in the column, **bolded H** is highest H value in report

\*\* "n/a" - means the sign did not collect any data at the time stipulated in the report. "n/a" values are NOT included in calculations.

Generated on May 01, 2024 at 4:10 PM

SafePace Cloud powered by Web Director®

*Rt 22 closed*



# Count by Speed Range Report

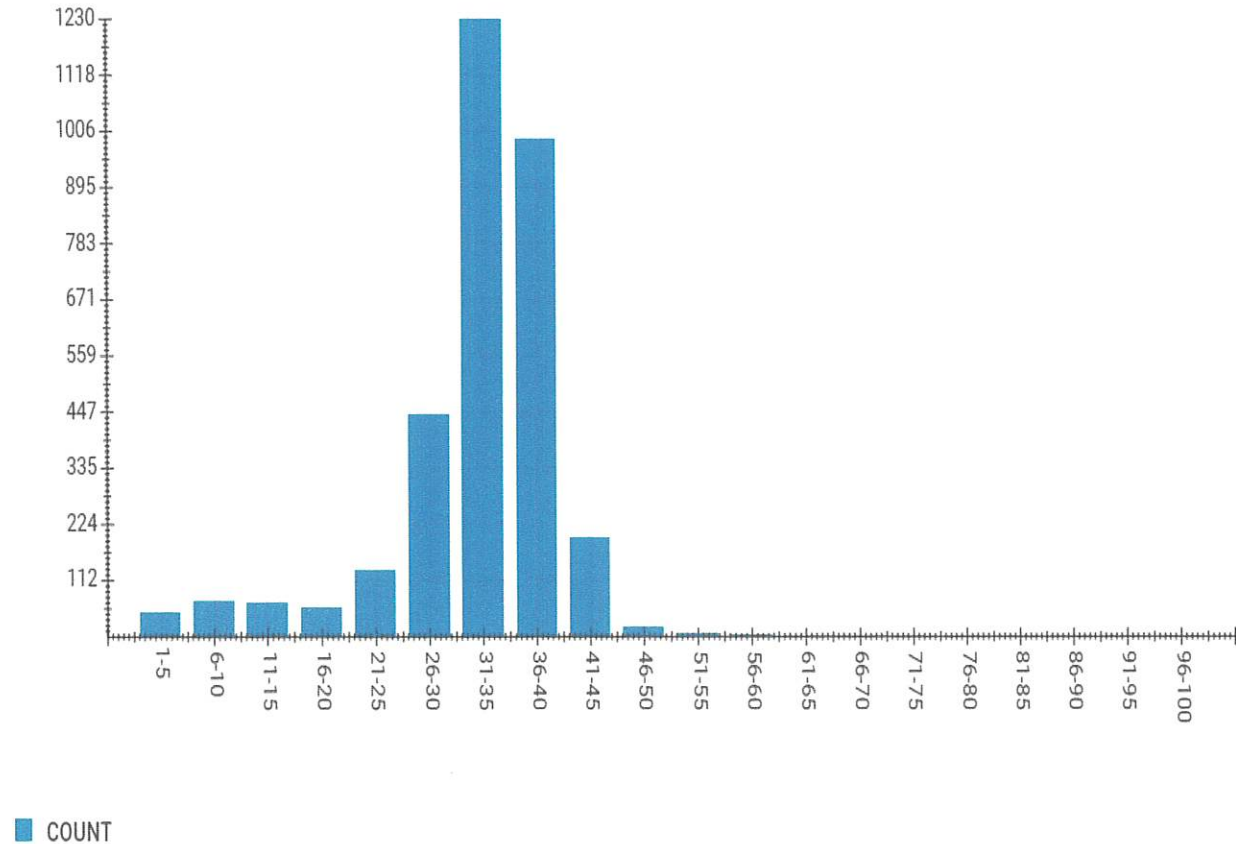
Report period: 2024-04-18 to 2024-04-25

Location: Adams Crossing Road

Address: Adams Crossing Road

Count By Speed Range

| Speed (mph) | Count |
|-------------|-------|
| 1-5         | 46    |
| 6-10        | 71    |
| 11-15       | 66    |
| 16-20       | 56    |
| 21-25       | 131   |
| 26-30       | 442   |
| 31-35       | 1230  |
| 36-40       | 989   |
| 41-45       | 195   |
| 46-50       | 17    |
| 51-55       | 4     |
| 56-60       | 1     |
| 61-65       | 0     |
| 66-70       | 0     |
| 71-75       | 0     |
| 76-80       | 0     |
| 81-85       | 0     |
| 86-90       | 0     |
| 91-95       | 0     |
| 96-100      | 0     |
| Total       | 3248  |



|                     |    |   |    |    |    |
|---------------------|----|---|----|----|----|
| 2024-04-25 10:45:00 | 5  | 2 | 3  | 34 | 41 |
| 2024-04-25 11:00:00 | 8  | 3 | 5  | 31 | 40 |
| 2024-04-25 11:15:00 | 6  | 1 | 5  | 28 | 36 |
| 2024-04-25 11:30:00 | 2  | 0 | 2  | 27 | 29 |
| 2024-04-25 11:45:00 | 4  | 2 | 2  | 35 | 39 |
| 2024-04-25 12:00:00 | 9  | 3 | 6  | 31 | 39 |
| 2024-04-25 12:15:00 | 9  | 0 | 9  | 17 | 34 |
| 2024-04-25 12:30:00 | 3  | 2 | 1  | 36 | 40 |
| 2024-04-25 12:45:00 | 6  | 2 | 4  | 33 | 39 |
| 2024-04-25 13:00:00 | 2  | 1 | 1  | 35 | 40 |
| 2024-04-25 13:15:00 | 8  | 1 | 7  | 30 | 35 |
| 2024-04-25 13:30:00 | 8  | 1 | 7  | 30 | 37 |
| 2024-04-25 13:45:00 | 9  | 0 | 9  | 23 | 35 |
| 2024-04-25 14:00:00 | 6  | 4 | 2  | 34 | 45 |
| 2024-04-25 14:15:00 | 10 | 2 | 8  | 33 | 40 |
| 2024-04-25 14:30:00 | 14 | 4 | 10 | 31 | 45 |
| 2024-04-25 14:45:00 | 5  | 2 | 3  | 35 | 40 |
| 2024-04-25 15:00:00 | 8  | 2 | 6  | 32 | 42 |
| 2024-04-25 15:15:00 | 7  | 2 | 5  | 34 | 40 |
| 2024-04-25 15:30:00 | 9  | 4 | 5  | 34 | 41 |
| 2024-04-25 15:45:00 | 7  | 2 | 5  | 33 | 38 |
| 2024-04-25 16:00:00 | 15 | 3 | 12 | 33 | 40 |
| 2024-04-25 16:15:00 | 6  | 4 | 2  | 37 | 43 |
| 2024-04-25 16:30:00 | 14 | 5 | 9  | 34 | 45 |
| 2024-04-25 16:45:00 | 11 | 6 | 5  | 33 | 43 |
| 2024-04-25 17:00:00 | 12 | 2 | 10 | 27 | 44 |
| 2024-04-25 17:15:00 | 15 | 8 | 7  | 34 | 45 |
| 2024-04-25 17:30:00 | 10 | 7 | 3  | 37 | 47 |
| 2024-04-25 17:45:00 | 12 | 5 | 7  | 33 | 42 |
| 2024-04-25 18:00:00 | 5  | 3 | 2  | 38 | 46 |
| 2024-04-25 18:15:00 | 4  | 1 | 3  | 33 | 37 |
| 2024-04-25 18:30:00 | 6  | 1 | 5  | 32 | 39 |
| 2024-04-25 18:45:00 | 2  | 0 | 2  | 27 | 32 |

|                     |           |           |           |             |     |
|---------------------|-----------|-----------|-----------|-------------|-----|
| 2024-04-25 19:00:00 | 1         | 1         | 0         | 37          | 37  |
| 2024-04-25 19:15:00 | 5         | 2         | 3         | 32          | 41  |
| 2024-04-25 19:30:00 | 4         | 3         | 1         | 36          | 39  |
| 2024-04-25 19:45:00 | 3         | 1         | 2         | 26          | 45  |
| 2024-04-25 20:00:00 | 3         | 1         | 2         | 35          | 36  |
| 2024-04-25 20:15:00 | n/a       | 0         | n/a       | n/a         | n/a |
| 2024-04-25 20:30:00 | 3         | 0         | 3         | 32          | 35  |
| 2024-04-25 20:45:00 | 5         | 2         | 3         | 31          | 43  |
| 2024-04-25 21:00:00 | 2         | 0         | 2         | 29          | 34  |
| 2024-04-25 21:15:00 | n/a       | 0         | n/a       | n/a         | n/a |
| 2024-04-25 21:30:00 | 2         | 0         | 2         | 33          | 35  |
| 2024-04-25 21:45:00 | 1         | 0         | 1         | 34          | 34  |
| 2024-04-25 22:00:00 | n/a       | 0         | n/a       | n/a         | n/a |
| 2024-04-25 22:15:00 | n/a       | 0         | n/a       | n/a         | n/a |
| 2024-04-25 22:30:00 | 2         | 0         | 2         | 29          | 32  |
| 2024-04-25 22:45:00 | 3         | 2         | 1         | 36          | 38  |
| 2024-04-25 23:00:00 | 1         | 0         | 1         | 30          | 30  |
| 2024-04-25 23:15:00 | n/a       | 0         | n/a       | n/a         | n/a |
| 2024-04-25 23:30:00 | n/a       | 0         | n/a       | n/a         | n/a |
| 2024-04-25 23:45:00 | n/a       | 0         | n/a       | n/a         | n/a |
| Summary             | SUM: 3248 | SUM: 1206 | SUM: 2042 | AVG: 26 mph |     |

H - highest value in the column, bolded H is highest H value in report  
 \*\* "n/a" - means the sign did not collect any data at the time stipulated in the report. "n/a" values are NOT included in calculations.

# Custom Report: My Custom Report

**Location:** Adams Crossing Road

**Address:** Adams Crossing Road

**Speed Limit:** From schedule 35 mph

**Total Vehicle Count:** 2324

Report period: 2024-04-25 to 2024-05-01

### DATA COLLECTION TYPES

| Date/Time              | Total Vehicles Count | # of Speed Violations | # of Vehicles Respecting Limit | Average Speed(mph) | Maximum Speed (mph) |
|------------------------|----------------------|-----------------------|--------------------------------|--------------------|---------------------|
| 2024-05-01<br>23:30:00 | n/a                  | 0                     | n/a                            | n/a                | n/a                 |
| 2024-05-01<br>23:45:00 | n/a                  | 0                     | n/a                            | n/a                | n/a                 |
| Summary                | SUM: 2324            | SUM: 856              | SUM: 1468                      | AVG: 24 mph        |                     |

Rows per page: 10 671-673 of 673

\* **H** - highest value in the column, **bolded H** is highest H value in report

\*\* "n/a" - means the sign did not collect any data at the time stipulated in the report. "n/a" values are NOT included in calculations.

Generated on May 09, 2024 at 2:50 PM

SafePace Cloud powered by Web Director®

*Rt 22  
1st wk reopened*



# Count by Speed Range Report

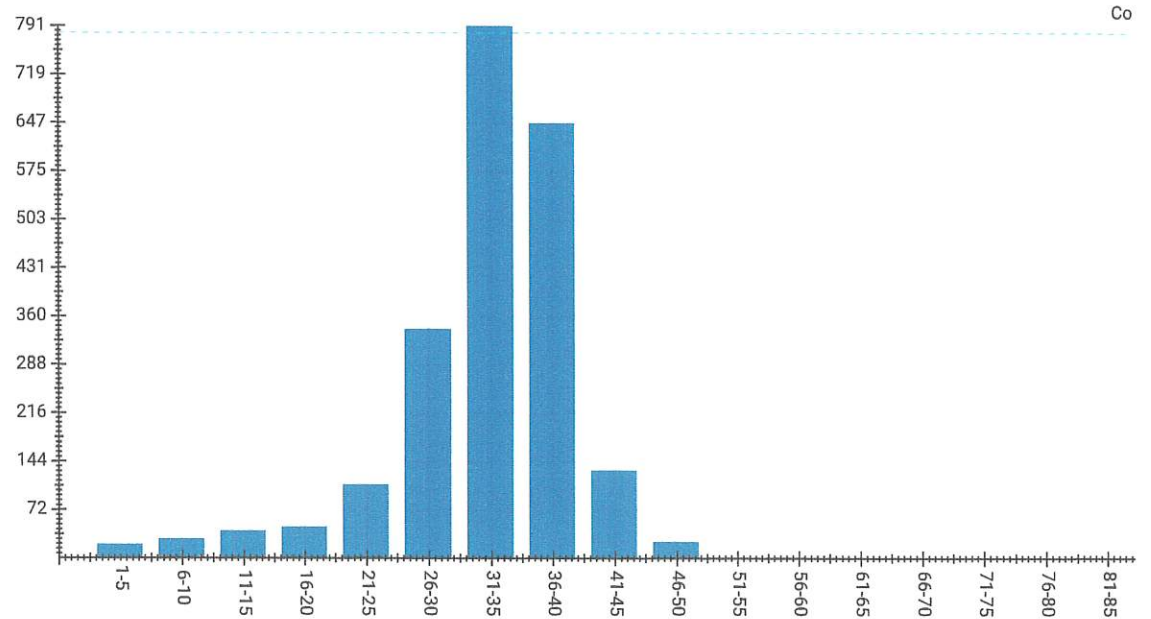
Location: Adams Crossing Road

Address: Adams Crossing Road

Report period: 2024-04-25 to 2024-05-01

Count By Speed Range

| Speed (mph) | Count |
|-------------|-------|
| 1-5         | 21    |
| 6-10        | 29    |
| 11-15       | 41    |
| 16-20       | 47    |
| 21-25       | 110   |
| 26-30       | 341   |
| 31-35       | 791   |
| 36-40       | 647   |
| 41-45       | 131   |
| 46-50       | 25    |
| 51-55       | 0     |
| 56-60       | 1     |
| 61-65       | 0     |
| 66-70       | 0     |
| 71-75       | 0     |
| 76-80       | 0     |
| 81-85       | 0     |
| 86-90       | 0     |
| 91-95       | 0     |
| 96-100      | 0     |
| Total       | 2184  |



■ COUNT

|                     |     |   |     |     |     |
|---------------------|-----|---|-----|-----|-----|
| 2024-05-09 05:00:00 | n/a | 0 | n/a | n/a | n/a |
| 2024-05-09 05:15:00 | 2   | 1 | 1   | 35  | 37  |
| 2024-05-09 05:30:00 | 3   | 3 | 0   | 38  | 40  |
| 2024-05-09 05:45:00 | n/a | 0 | n/a | n/a | n/a |
| 2024-05-09 06:00:00 | 2   | 2 | 0   | 36  | 37  |
| 2024-05-09 06:15:00 | 2   | 1 | 1   | 35  | 38  |
| 2024-05-09 06:30:00 | 5   | 4 | 1   | 38  | 42  |
| 2024-05-09 06:45:00 | 4   | 4 | 0   | 39  | 40  |
| 2024-05-09 07:00:00 | 4   | 3 | 1   | 37  | 42  |
| 2024-05-09 07:15:00 | 5   | 3 | 2   | 36  | 45  |
| 2024-05-09 07:30:00 | 3   | 2 | 1   | 34  | 38  |
| 2024-05-09 07:45:00 | 4   | 2 | 2   | 34  | 43  |
| 2024-05-09 08:00:00 | 3   | 1 | 2   | 36  | 41  |
| 2024-05-09 08:15:00 | 2   | 0 | 2   | 22  | 34  |
| 2024-05-09 08:30:00 | 7   | 3 | 4   | 30  | 39  |
| 2024-05-09 08:45:00 | 5   | 0 | 5   | 29  | 31  |
| 2024-05-09 09:00:00 | 6   | 2 | 4   | 34  | 40  |
| 2024-05-09 09:15:00 | n/a | 0 | n/a | n/a | n/a |
| 2024-05-09 09:30:00 | 3   | 0 | 3   | 31  | 34  |
| 2024-05-09 09:45:00 | 2   | 0 | 2   | 31  | 33  |
| 2024-05-09 10:00:00 | 1   | 1 | 0   | 37  | 37  |
| 2024-05-09 10:15:00 | 2   | 1 | 1   | 34  | 40  |
| 2024-05-09 10:30:00 | 3   | 1 | 2   | 35  | 37  |
| 2024-05-09 10:45:00 | 4   | 0 | 4   | 25  | 30  |
| 2024-05-09 11:00:00 | 1   | 1 | 0   | 36  | 36  |
| 2024-05-09 11:15:00 | 5   | 2 | 3   | 29  | 38  |
| 2024-05-09 11:30:00 | 3   | 1 | 2   | 32  | 37  |
| 2024-05-09 11:45:00 | 4   | 2 | 2   | 32  | 37  |
| 2024-05-09 12:00:00 | 6   | 2 | 4   | 31  | 45  |
| 2024-05-09 12:15:00 | 5   | 0 | 5   | 22  | 34  |
| 2024-05-09 12:30:00 | 3   | 2 | 1   | 35  | 40  |
| 2024-05-09 12:45:00 | 8   | 5 | 3   | 36  | 42  |
| 2024-05-09 13:00:00 | 3   | 2 | 1   | 37  | 42  |

|                     |           |           |           |             |    |
|---------------------|-----------|-----------|-----------|-------------|----|
| 2024-05-09 13:15:00 | 2         | 0         | 2         | 28          | 30 |
| 2024-06-09 13:30:00 | 6         | 1         | 5         | 31          | 45 |
| 2024-05-09 13:45:00 | 8         | 4         | 4         | 36          | 46 |
| 2024-05-09 14:00:00 | 5         | 2         | 3         | 34          | 37 |
| 2024-05-09 14:15:00 | 1         | 0         | 1         | 29          | 29 |
| 2024-05-09 14:30:00 | 3         | 3         | 0         | 37          | 39 |
| Summary             | SUM: 2686 | SUM: 1024 | SUM: 1662 | AVG: 24 mph |    |

H - highest value in the column, bolded H is highest H value in report

\*\* "n/a" - means the sign did not collect any data at the time stipulated in the report. "n/a" values are NOT included in calculations.

12



# Custom Report: My Custom Report

**Location:** Adams Crossing Road  
**Address:** Adams Crossing Road  
**Speed Limit:** From schedule 35 mph  
**Total Vehicle Count:** 2693

**Report period:** 2024-05-01 to 2024-05-09

### DATA COLLECTION TYPES

| Date/Time           | Total Vehicles Count | # of Speed Violations | # of Vehicles Respecting Limit | Average Speed(mph) | Maximum Speed (mph) |
|---------------------|----------------------|-----------------------|--------------------------------|--------------------|---------------------|
| 2024-05-09 13:00:00 | 3                    | 2                     | 1                              | 37                 | 42                  |
| 2024-05-09 13:15:00 | 2                    | 0                     | 2                              | 28                 | 30                  |
| 2024-05-09 13:30:00 | 6                    | 1                     | 5                              | 31                 | 45                  |
| 2024-05-09 13:45:00 | 8                    | 4                     | 4                              | 36                 | 46                  |
| 2024-05-09 14:00:00 | 5                    | 2                     | 3                              | 34                 | 37                  |
| 2024-05-09 14:15:00 | 1                    | 0                     | 1                              | 29                 | 29                  |
| 2024-05-09 14:30:00 | 3                    | 3                     | 0                              | 37                 | 39                  |
| 2024-05-09 14:45:00 | 7                    | 4                     | 3                              | 35                 | 42                  |
| Summary             | SUM: 2693            | SUM: 1028             | SUM: 1665                      | AVG: 24 mph        |                     |

- REPORTS
- MAP
- ALERTS
- TOOLBAR
- MANAGE LOCATION
- USER
- SYSTEM

id  
id  
®

|                     |    |   |    |    |    |
|---------------------|----|---|----|----|----|
| 2024-05-01 11:45:00 | 3  | 1 | 2  | 25 | 35 |
| 2024-05-01 12:00:00 | 3  | 1 | 2  | 33 | 37 |
| 2024-05-01 12:15:00 | 4  | 2 | 2  | 35 | 39 |
| 2024-05-01 12:30:00 | 7  | 3 | 4  | 34 | 38 |
| 2024-05-01 12:45:00 | 3  | 2 | 1  | 37 | 39 |
| 2024-05-01 13:00:00 | 5  | 2 | 3  | 32 | 37 |
| 2024-05-01 13:15:00 | 3  | 1 | 2  | 33 | 37 |
| 2024-05-01 13:30:00 | 8  | 4 | 4  | 32 | 37 |
| 2024-05-01 13:45:00 | 4  | 0 | 4  | 29 | 34 |
| 2024-05-01 14:00:00 | 3  | 1 | 2  | 32 | 35 |
| 2024-05-01 14:15:00 | 5  | 1 | 4  | 33 | 37 |
| 2024-05-01 14:30:00 | 5  | 3 | 2  | 35 | 43 |
| 2024-05-01 14:45:00 | 8  | 3 | 5  | 35 | 38 |
| 2024-05-01 15:00:00 | 7  | 1 | 6  | 32 | 35 |
| 2024-05-01 15:15:00 | 3  | 2 | 1  | 34 | 36 |
| 2024-05-01 15:30:00 | 9  | 4 | 5  | 35 | 40 |
| 2024-05-01 15:45:00 | 10 | 0 | 10 | 19 | 35 |
| 2024-05-01 16:00:00 | 7  | 2 | 5  | 33 | 38 |
| 2024-05-01 16:15:00 | 8  | 6 | 2  | 35 | 39 |
| 2024-05-01 16:30:00 | 5  | 4 | 1  | 37 | 40 |
| 2024-05-01 16:45:00 | 4  | 0 | 4  | 33 | 35 |
| 2024-05-01 17:00:00 | 9  | 4 | 5  | 36 | 44 |
| 2024-05-01 17:15:00 | 11 | 5 | 6  | 34 | 40 |
| 2024-05-01 17:30:00 | 13 | 5 | 8  | 34 | 40 |
| 2024-05-01 17:45:00 | 10 | 2 | 8  | 30 | 36 |
| 2024-05-01 18:00:00 | 1  | 0 | 1  | 31 | 31 |
| 2024-05-01 18:15:00 | 18 | 8 | 10 | 34 | 47 |
| 2024-05-01 18:30:00 | 5  | 3 | 2  | 36 | 39 |
| 2024-05-01 18:45:00 | 4  | 2 | 2  | 34 | 39 |
| 2024-05-01 19:00:00 | 9  | 3 | 6  | 33 | 44 |
| 2024-05-01 19:15:00 | 4  | 2 | 2  | 33 | 38 |
| 2024-05-01 19:30:00 | 4  | 1 | 3  | 35 | 40 |
| 2024-05-01 19:45:00 | 5  | 0 | 5  | 29 | 35 |

|                     |           |          |           |             |     |
|---------------------|-----------|----------|-----------|-------------|-----|
| 2024-05-01 20:00:00 | 5         | 3        | 2         | 37          | 41  |
| 2024-05-01 20:15:00 | 3         | 0        | 3         | 30          | 32  |
| 2024-05-01 20:30:00 | 4         | 1        | 3         | 22          | 37  |
| 2024-05-01 20:45:00 | 1         | 0        | 1         | 19          | 19  |
| 2024-05-01 21:00:00 | 4         | 0        | 4         | 27          | 31  |
| 2024-05-01 21:15:00 | 2         | 1        | 1         | 35          | 38  |
| 2024-05-01 21:30:00 | 2         | 0        | 2         | 32          | 32  |
| 2024-05-01 21:45:00 | 2         | 0        | 2         | 29          | 33  |
| 2024-05-01 22:00:00 | 1         | 0        | 1         | 27          | 27  |
| 2024-05-01 22:15:00 | n/a       | 0        | n/a       | n/a         | n/a |
| 2024-05-01 22:30:00 | n/a       | 0        | n/a       | n/a         | n/a |
| 2024-05-01 22:45:00 | n/a       | 0        | n/a       | n/a         | n/a |
| 2024-05-01 23:00:00 | n/a       | 0        | n/a       | n/a         | n/a |
| 2024-05-01 23:15:00 | 1         | 1        | 0         | 40          | 40  |
| 2024-05-01 23:30:00 | n/a       | 0        | n/a       | n/a         | n/a |
| 2024-05-01 23:45:00 | n/a       | 0        | n/a       | n/a         | n/a |
| Summary             | SUM: 2324 | SUM: 856 | SUM: 1468 | AVG: 24 mph |     |

H - highest value in the column, bolded H is highest H value in report

\*\* "n/a" - means the sign did not collect any data at the time stipulated in the report. "n/a" values are NOT included in calculations.

## Summary Comparison Report

Location: Adams Crossing Road  
 Address: Adams Crossing Road  
 Speed Limit: From schedule 35 mph

Report Period 1: 2024-04-22 to 2024-05-05  
 Report Period 2: 2024-05-06 to 2024-05-12

| Day          | Average Vehicles Count |             |             | Average Speed  |                |            | Average Number of Speed Violations |            |            | % of Speed Violations |                  |             |
|--------------|------------------------|-------------|-------------|----------------|----------------|------------|------------------------------------|------------|------------|-----------------------|------------------|-------------|
|              | Period 1               | Period 2    | Difference  | Period 1       | Period 2       | Difference | Period 1                           | Period 2   | Difference | Period 1              | Period 2         | Difference  |
| Monday       | 313                    | 306         | 7           | H 33           | H 34           | -1         | 126                                | H 133      | -7         | 40 %                  | 43 %             | -3 %        |
| Tuesday      | 324                    | 306         | 18          | H 33           | 32             | H 1        | 126                                | 108        | 18         | 39 %                  | 35 %             | 4 %         |
| Wednesday    | 313                    | H 332       | -19         | H 33           | 32             | H 1        | 134                                | 120        | 14         | H 43 %                | 36 %             | H 7 %       |
| Thursday     | 345                    | 144         | H 201       | 32             | 33             | -1         | 121                                | 66         | H 55       | 35 %                  | H 46 %           | -11 %       |
| Friday       | H 390                  | n/a         | n/a         | H 33           | n/a            | n/a        | H 141                              | n/a        | n/a        | 36 %                  | n/a              | n/a         |
| Saturday     | 360                    | n/a         | n/a         | 32             | n/a            | n/a        | 120                                | n/a        | n/a        | 33 %                  | n/a              | n/a         |
| Sunday       | 255                    | n/a         | n/a         | 32             | n/a            | n/a        | 101                                | n/a        | n/a        | 40 %                  | n/a              | n/a         |
| <b>Total</b> | <b>2300</b>            | <b>1088</b> | <b>1212</b> | <b>AVG: 33</b> | <b>AVG: 33</b> | <b>0</b>   | <b>869</b>                         | <b>427</b> | <b>442</b> | <b>AVG: 38 %</b>      | <b>AVG: 23 %</b> | <b>15 %</b> |

### Count By Speed Range

| Speed | Total Vehicles Count |          |            | % of Vehicles Count |          |            | % of Vehicles Count |          |            | % of Speed Violations |          |            |
|-------|----------------------|----------|------------|---------------------|----------|------------|---------------------|----------|------------|-----------------------|----------|------------|
|       | Period 1             | Period 2 | Difference | Period 1            | Period 2 | Difference | Period 1            | Period 2 | Difference | Period 1              | Period 2 | Difference |
| 1-5   | 42                   | 10       | 32         | 1                   | 1        | 0          | 0                   | 0        | 0          | 0 %                   | 0 %      | H 0 %      |
| 6-10  | 53                   | 18       | 35         | 1                   | 2        | -1         | 0                   | 0        | 0          | 0 %                   | 0 %      | H 0 %      |
| 11-15 | 83                   | 15       | 68         | 2                   | 1        | 1          | 0                   | 0        | 0          | 0 %                   | 0 %      | H 0 %      |
| 16-20 | 89                   | 18       | 71         | 2                   | 2        | 0          | 0                   | 0        | 0          | 0 %                   | 0 %      | H 0 %      |
| 21-25 | 220                  | 43       | 177        | 5                   | 4        | 1          | 0                   | 0        | 0          | 0 %                   | 0 %      | H 0 %      |
| 26-30 | 686                  | 174      | 512        | 15                  | 16       | -1         | 0                   | 0        | 0          | 0 %                   | 0 %      | H 0 %      |
| 31-35 | H 1693               | H 383    | H 1310     | H 37                | H 35     | H 2        | 0                   | 0        | 0          | 0 %                   | 0 %      | H 0 %      |
| 36-40 | 1392                 | 345      | 1047       | 30                  | 32       | -2         | H 1392              | H 345    | H 1047     | H 80 %                | H 81 %   | -1 %       |
| 41-45 | 296                  | 72       | 224        | 6                   | 7        | -1         | 296                 | 72       | 224        | 17 %                  | 17 %     | H 0 %      |
| 46-50 | 39                   | 8        | 31         | 1                   | 1        | 0          | 39                  | 8        | 31         | 2 %                   | 2 %      | H 0 %      |
| 51-55 | 5                    | 2        | 3          | 0                   | 0        | 0          | 5                   | 2        | 3          | 0 %                   | 0 %      | H 0 %      |

| Speed        | Total Vehicles Count |             |             | % of Vehicles Count |               |            | % of Vehicles Count |            |             | % of Speed Violations |                 |            |
|--------------|----------------------|-------------|-------------|---------------------|---------------|------------|---------------------|------------|-------------|-----------------------|-----------------|------------|
|              | Period 1             | Period 2    | Difference  | Period 1            | Period 2      | Difference | Period 1            | Period 2   | Difference  | Period 1              | Period 2        | Difference |
| 56-60        | 2                    | 0           | 2           | 0                   | 0             | 0          | 2                   | 0          | 2           | 0 %                   | 0 %             | H 0 %      |
| 61-65        | 0                    | 0           | 0           | 0                   | 0             | 0          | 0                   | 0          | 0           | 0 %                   | 0 %             | H 0 %      |
| 66-70        | 0                    | 0           | 0           | 0                   | 0             | 0          | 0                   | 0          | 0           | 0 %                   | 0 %             | H 0 %      |
| 71-75        | 0                    | 0           | 0           | 0                   | 0             | 0          | 0                   | 0          | 0           | 0 %                   | 0 %             | H 0 %      |
| 76-80        | 0                    | 0           | 0           | 0                   | 0             | 0          | 0                   | 0          | 0           | 0 %                   | 0 %             | H 0 %      |
| 81-85        | 0                    | 0           | 0           | 0                   | 0             | 0          | 0                   | 0          | 0           | 0 %                   | 0 %             | H 0 %      |
| 86-90        | 0                    | 0           | 0           | 0                   | 0             | 0          | 0                   | 0          | 0           | 0 %                   | 0 %             | H 0 %      |
| 91-95        | 0                    | 0           | 0           | 0                   | 0             | 0          | 0                   | 0          | 0           | 0 %                   | 0 %             | H 0 %      |
| 96-100       | 0                    | 0           | 0           | 0                   | 0             | 0          | 0                   | 0          | 0           | 0 %                   | 0 %             | H 0 %      |
| <b>Total</b> | <b>4600</b>          | <b>1088</b> | <b>3512</b> | <b>AVG: 5</b>       | <b>AVG: 5</b> | <b>0</b>   | <b>1734</b>         | <b>427</b> | <b>1307</b> | <b>AVG: 5 %</b>       | <b>AVG: 5 %</b> | <b>0 %</b> |

H - highest value in the column, bolded H is highest H value in report

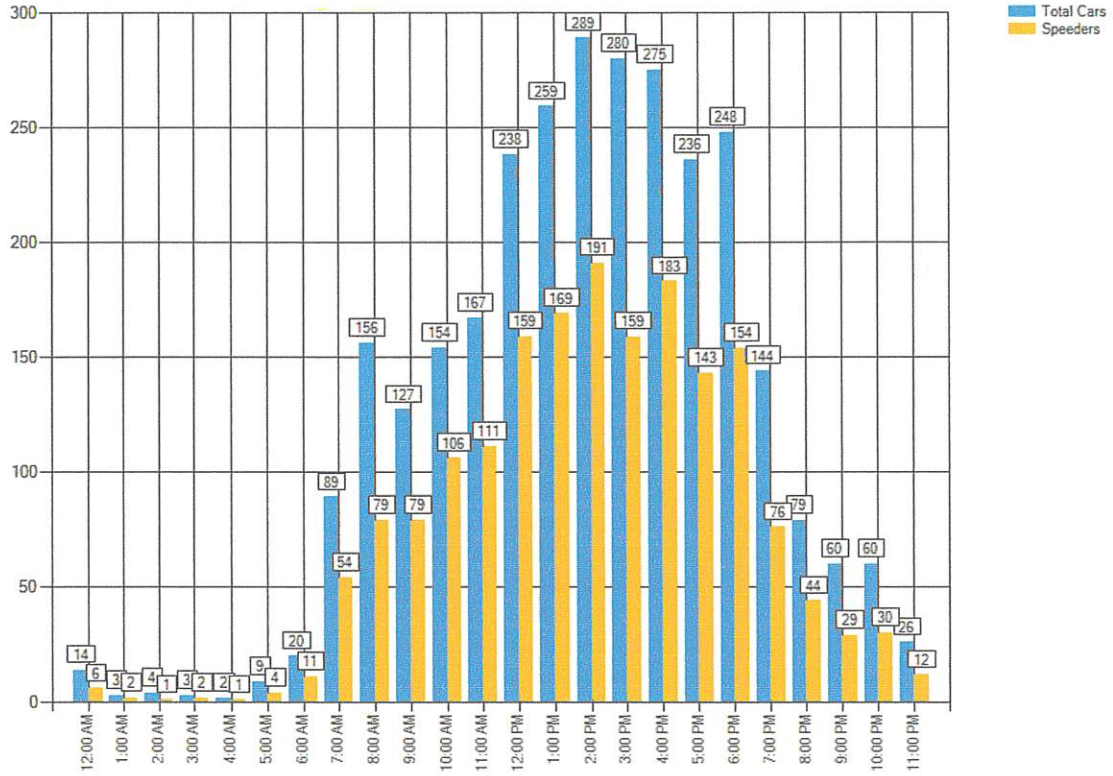
\*\* "n/a" - means the sign did not collect any data at the time stipulated in the report. "n/a" values are NOT included in calculations.

Date: 03/07/2024 12:00 AM  
 Report Start Date: 03/01/2024 09:00 PM  
 Report End Date: 03/07/2024 11:00 PM

Show Counts

Time Interval: 60 minutes  
 Speed Interval: 5 mph  
 Posted Speed Limit: 45 mph  
 Average Speed: 47 mph  
 Highest Speed: 84 mph  
 50th Percentile: 47 mph  
 85th Percentile: 52 mph  
 Number Above Speed Limit: 1805  
 Total Number of Vehicles: 2942

Comments:  
 County Route 9 at Old Gale Hill Rd T/New Lebanon



County report

|                                  |                             |                                 |
|----------------------------------|-----------------------------|---------------------------------|
| <b>Title:</b>                    | <b>Traffic Speed Survey</b> |                                 |
| <b>Date:</b>                     |                             | <b>3/7/2024 0:00</b>            |
| <b>Start Date/Time:</b>          |                             | <b>3/1/2024 21:00</b> Comments: |
| <b>Finish Date/Time:</b>         |                             | <b>3/7/2024 23:00</b>           |
| <b>Time Interval:</b>            | <b>60 minutes</b>           |                                 |
| <b>Speed Interval:</b>           | <b>5 mph</b>                |                                 |
| <b>Posted Speed Limit:</b>       | <b>45 mph</b>               |                                 |
| <b>Average Speed (mph)</b>       |                             | <b>47.38103331</b>              |
| <b>Maximum Speed (mph)</b>       |                             | <b>84</b>                       |
| <b>50th Percentile:</b>          |                             | <b>47</b>                       |
| <b>85th Percentile:</b>          |                             | <b>52</b>                       |
| <b>Number Above Speed Limit:</b> |                             | <b>1805</b>                     |
| <b>Total Number of Vehicles:</b> |                             | <b>2942</b>                     |