

Assessor:

1. Work on the Reassessment is well underway. At this time Land schedule has been applied to all vacant parcels and all Vacant land parcels have been individually reviewed with new values being set. Residential sales are being reviewed again and the residential comps are being set up. Models are getting set up and application of these will begin soon.
2. Field review of permits is being conducted, with the new or updated inventory being applied.
3. All usual administrative work is being completed as normal.
4. We are waiting to see if the Schools are going to update their exemption limits on the low-income Senior and Disabled exemptions.
5. Results of the Scar hearings are in with only 1 out of 4 being reduced.

Building Department:

No report

Business & Economic Development:

(1) We voted to undertake a survey of local businesses. This effort will include a structured survey and a more free-form interview. Our hope is to produce a resource about the state of business in New Lebanon. We would like this resource to be useful to the Town Board. If any members have questions that this resource could answer, we would like to hear them.

(2) We have a few members who have not attended a meeting in over a year. We have reached out to them before to invite them to join. We are reaching out again to make sure they know we are enthusiastic about their membership on this committee. If they prefer not to be active members of the committee, though, we understand. The problem is that having members who don't show up hurts our ability to meet our quorum. We voted to recommend that the Town Board remove them from our membership if we don't hear from them before our next meeting. We will advise the Town Board in our next committee report.

CAC, Climate Smart & Environmental Management:

CAC: From April 2023 to date, CAC volunteers have worked over 120 hours combined on two large projects, Shatford Park maintenance and doing Water Testing.

SHATFORD PARK

Park super volunteer Doug Godley has done the bulk of the 2023 plant maintenance and mulching in the park, with some help from CAC members Peg Munves and Bill O'Neill.

CAC member Bob Gilson assessed the nursery plants and we recently offered the 30 remaining plants in the nursery to those who lost plants in the Beaver Dam break in the Springs.

Peg Munves reached out to Beth Loeffler of the DEC's Trees for Tribes program to discuss the extensive and ongoing erosion of the park stream. There is consensus that heavy rains and storms will remain for the next few years at least. Beth is sending additional information on potential additional fixes for the heavy erosion and CAC member Tyler Fogg is looking at many options as well. Beth and Peg discussed how the 2021 planting density was modified greatly from the original plan. True repair is an uninterrupted dense and deep planting of a variety of plants at the shore of a stream (which is easily seen at either end of where we planted). The change of planting plans was some result residents asking for more access to the stream. DEC believes as it stands now, the plants we have in the ground are unlikely to have significant effect on erosion, at least in the near future. They are still highly valuable to the park and will have a significant effect on flood control, filtering contaminants entering the water, carbon capturing, air purification and shade protection.

The CAC will have something more on potential erosion control options, including the possibility of doing nothing more, to share with the Town Board at the November TB meeting.

DRINKING WATER SOURCE PROTECTION PLAN - DWSP2

Peg Munves and Donald Lamonaca have been working on the water testing as part of the implementation of the Drinking Water Source Protection Plan (DWSP2).

Over 60 residents have reached out to the CAC for testing and we welcome more inquires. We have completed 53 tests, several of which were re-testing where there has been E. coli or coliform found. We are also available to give advice on mitigation and any other support people need.

Currently the CAC is gathering enough water testing data to get a baseline for what is going on all over New Lebanon. In general wells are in good shape – the outstanding area of concern remains the 20/22 Corridor where we are seeing some persistent coliform and E. coli.

Our Source Water Specialist, Mary Theresa Julien at NY Rural Water addressed the Town Board in September. She submitted the DWSP2 to DEC for approval and we hope to hear about this by November 2023. The DWSP2 is a living document and will be updated and amended as needed.

We are looking forward to spending time over the winter to assess the results, and to getting some expert advice about how to best use the data, and what else to test for, since this is a long-term and ongoing project. We are also putting a public meeting plan together to educate folks about the importance of testing regularly and things people can do to keep their water safe.

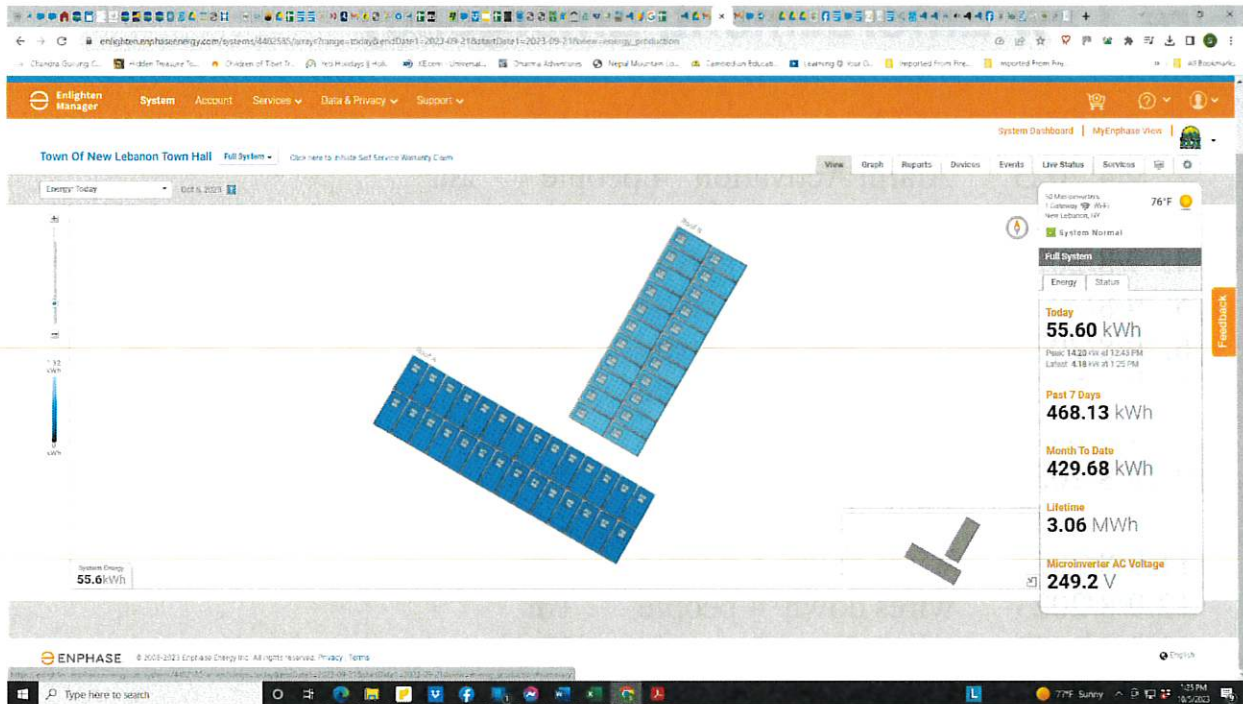
Residents have been very appreciative of the Town's efforts on water. The CAC has spent a total of about \$5,415 so far out of the \$30,000 in ARPA funds allocated to the testing. We will be adding at least one more testing date in October.

OTHER NEWS

This month the CAC looks forward to meeting with Shawn, and learning more about the Mahican's and their interest in re-patriating the Springs. We are also exploring if and how to include the Springs into the DWSP2. CAC members Bruce Shenker, Tyler Fogg and Steve Powers are exploring creating a CEA for our aquifers and will present information to the Town Board when ready. We are also exploring how we are doing with achieving the goals set out by the 2017 Natural Resource Conservation Plan.

CSC:

The latest figures from the solar panels show that they have produced over 3000 KWh of electricity since coming online August 24. That's the equivalent of powering 101 houses for 1 full day. 2.22 tons of carbon have been offset which is the same as what 38 trees could accomplish. During the same period, the Town Hall and the Garage only used approximately 580KWh. I am checking to compare to the same period last year. Here's a screengrab of the production:



On Sept 27, New Lebanon's Emergency Management Coordinator, Ed Godfroy & CSC Chair, Steve Powers participated in a Columbia County Climate Vulnerability Workshop to identify vulnerable areas of each town and, eventually, create a Climate Change Adaptation and Resilience Plan (CARP) to protect residents and infrastructure from the effects of climate hazards and risks,

like flooding, heat stress or short-term drought. A plan should be ready to present to the Town Board by next Spring. The next meeting will be on Oct 25.

You may recall that the CARP team sent out a survey to New Lebanon residents a few months ago to find out what community assets and environmental impacts are important to them, hazards they have experienced, and what is at risk in their community. The results are out and were shared with us at the workshop. I am including the 4 charts here with the responses. New Lebanon had about 30 people respond.

We received a request from Cornell MBA student Alejandra Plaza Limon who graduated this year and has offered her voluntary services to the CSC for three months from Oct 15- Jan 15 to work on a Climate Action Plan for the town as well as to assist with completing some actions which have proved to be problematic for our volunteers. Alejandra worked with Marc and Steve in the early days after Columbia County received its Climate Smart designation. She was instrumental in creating the Roadmap to Bronze for Columbia County. We look forward to working again with her and would appreciate the Town Board approving this relationship and authorizing Supervisor Houghtling to sign any agreements required.

PLEASE SEE ATTACHED CHARTS OF CLIMATE HAZARDS.

EMC:

No report

Fire, Law Enforcement, Emergency

| | | | | |
|-----|-----------|-------------------|-----------|--------|
| 1. | 9/2/2023 | Parade | 7 people | 21hrs |
| 2. | 9/4/2023 | Alarm Activation | 4 people | 2hr |
| 3. | 9/7/2023 | wires down | 6 people | 3hr |
| 4. | 9/8/2023 | wires down | 1 person | 8min |
| 5. | 9/8/2023 | wires down | 1 person | 1.02hr |
| 6. | 9/8/2023 | wires down | 1 person | 10min |
| 7. | 9/8/2023 | wires down | 2 people | 2.56hr |
| 8. | 9/8/2023 | wires down | 1 person | 20 min |
| 9. | 9/8/2023 | wires down | 1 person | 44min |
| 10. | 9/8/2023 | wires down | 2 people | 2.40hr |
| 11. | 9/8/2023 | wires down | 5 people | 1hr |
| 12. | 9/8/2023 | wires down | 4 people | 1hr |
| 13. | 9/8/2023 | wires down | 2 people | 18min |
| 14. | 9/9/2023 | mutual aid | 2 people | 34min |
| 15. | 9/9/2023 | AAPI | 7 people | 28.6hr |
| 16. | 9/11/2023 | work detail/drill | 19 people | 38hr |
| 17. | 9/13/2023 | alarm activation | 1 person | 14min |
| 18. | 9/16/2023 | Mutual aid | 2 people | 1.02hr |
| 19. | 9/17/2023 | vehicle fire | 9 people | 2.55hr |

| | | | |
|---------------|-------------------|------------------|--------|
| 20.9/18/2023 | Drill | 5 people | 7.5hr |
| 21.9/18/2023 | wires down | 4 people | 4.24hr |
| 22.9/19/2023 | Drill | 5 people | 10hr |
| 23.9/23/2023 | indoor fuel odor | 5 people | 1.10hr |
| 24.9/23/2023 | alarm activation | 4 people | 1.12hr |
| 25.9/23/2023 | alarm activation | 1 person | 13min |
| Totals | 101 people | 129.68hrs | |

- Vehicle fire-1
- Alarm activation – 4
- Wires Down-12
- Indoor fuel odor-1
- Mutual Aid-2
- AAPI-1

21 alarms

- Drills – 3
- Parade – 1

4 other activities

Highway:

No report

Historian & LVHS

Historian:

Met with Glenn Fischer.

Met with the owner of property on West Street whose former owners include the Gillet family and the Shatford family. We met at Church of Our Savior because the Gillet and Shatford families were parishioners. There are several stained-glass windows illuminating the sanctuary that were given in memory of Gillet and Shatford family members.

Virtually attended the annual conference of the Association of Public Historians of New York State. The workshops I attended were on publishing histories, The North Fork Project – researching the work of immigrants in the eastern tip of Long Island, and the Freedom 2027 Project to commemorate the Underground Railroad in NYS.

Began researching Columbia County during the American Revolution with a concentration on New Lebanon citizens' participation both locally and nationally.

Continue research on the Election of 1876 and Samuel Tilden for a presentation to the Participation in Government classes at New Lebanon Jr.-Sr. High School.

Offered to work with the Railroad Depot Preservation Committee in grant writing and the application for state and national historic registries.

LVHS:

No report

Justice Court

No report

Library:

No report

Buildings, Parks & Recreation

Buildings:

No report

Parks:

No report

Recreation Commission:

In September, we had 3 events:

The Newcomers event on 9/9 was well attended and everyone had fun meeting each other. There were some requests to have the event more frequently. We probably would have had even more people if the whole town had power/internet that day.

On 9/10, we had a Community Walk at Sassafra, also well attended. Carol gave us a wonderfully informative tour of the museum and trails. These have been a great no-cost way to get people together and enjoying beautiful places in town.

On 9/23, we had Movie Night in the rain under the pavilion. I think more people would have come if it had been warmer and not raining. We chose September because it gets

dark early. To keep costs down, our library coordinated with Chatham to borrow the screen and projector they have in their Library of Things.

At our last meeting, we discussed the possibility of using the leftover budget towards an ice rink update. At the end of the season Pete McCagg offered to build it out of TPO roofing material if the town could fund the materials. He estimates it should last 10-15 years. Hope we can get it done, and that there's enough cold weather to keep it frozen. Estimates have been submitted for the town board to consider the project.

We also discussed other ideas for getting people together including the difficulty of communicating what's going on around town. We think having access to the board in front of the LVPA when it becomes the community center, which should be helpful.

Seniors:

Senior report:

OFA has put out the next Scoop which contains all the pertinent programs, here are a few of the most important.

HEAP has opened with a record number of applicants expected. Contact OFA if you have never applied, those who have received HEAP in the past should have received an application. Your fuel provider can help you as well. Also, monies to help with cleaning and tuning your heating system are available, for this program contact Social Services of Columbia County at 518-828-9411.

OFA Aging and Meals on Wheels are closed for the major holidays, see their schedule online or call them if you have a question.

Early voting dates were published: 10/28-11/5 9am until 5pm except 10/30 noon to 8pm. You can vote at Columbia County Office Building and Martin H. Glynn Municipal Building

Medicare Enrollment part of HIICAP is now open, if you need help contact Office of the Aging.

EPIC the Pharmacy Coverage Program has increase its income level, if you need help to pay for your drugs contact them at 518-828-4258

SNAP guidelines have also changed if you think you may qualify contact 518-828-8660 for assistance.

The Columbia County Senior Citizen of the year was awarded: Marge Laurie from Kinderhook and I were elected. We now move onto the State program and will participate in the state program on November 3 rd at 1pm online.

AARP Driver Safety program has been scheduled for 10/23 in Hudson, apply at 518-828- 4258, \$25 for AARP members, \$30 nonmembers the class runs from 8:30 am to 4pm, bring your license, a pen, and lunch. Arrive by 8:15am.

New Lebanon Seniors: The seniors have had two trips in the past month both were enjoyed by all that attended. The Seniors held a Bake sale Saturday 10/ 7 by the Family Dollar, thank you to anyone who purchased a dessert from us.10/20 we will have a costume party to celebrate the fall and spend some time socializing.

Traffic Safety:

Resurfacing of RT 20 east bound continues with completion shortly.

Most of the road work in the County is winding up as we prepare for winter and new projects for 2024 are being planned. The Traffic Safety President will be contacting the Supervisor to meet with the Racetrack, the Town, Emergency Management of the Town and I believe the County, EMS and Fire, and Police regarding the accident at the track with loss of life to see what needs to be done to prevent this from happening again. Discussion continues regarding issues in other parts of the County and how improvements are working. Attached is the Traffic Speed monitor report. I have given you a speed report from when we first placed this monitor by the West Lebanon Post Office facing east, a report from when I changed the sign to tell people their speed once school was opened and a report from the last week once I turned off the sign to see how the traffic pattern continued. I will move the sign to Shaker Road facing east within the next week, I will place the sign into storage in November to prevent it being in the way of snowplows for the winter.

In addition to the written report below, please see graphs at the end of this document

Volunteers:

No report

Quality of Life:

Huge thank you to Bob Gilson for his service to the QoL committee. We took a vote to recommend that the Town Board accept his letter of resignation and thank him for his service.

The QoL Committee will be bringing operation SAVE to the Town Hall on Friday, October 13th @6pm to provide a suicide prevention training. We will learn a brief overview of suicide, hear about suicide myths and misinformation, learn the risk factors for suicide and learn about the components of the SAVE model. The training is run by the VA, and is open to ALL to attend.

We continue to work on housing, we are in the process of working with Habitat for Humanity to locate an appropriate site to build 8-12 single family homes. We are trying to find a buildable parcel that is a minimum of 4 acres, preferably walkable to downtown. Please reach out to Supervisor Houghtling if you know of any property for sale that meets this criteria.

The QoL committee vote unanimously to request that the Town Board adopt the required resolution to become a NYS Pro housing community. This designation will allow New Lebanon to receive priority in applications for multiple funding programs through NYS.

The Wellness Rx, the nonprofit pharmacy looking to come to New Lebanon is almost ready to present their business plan and architectural renderings to the community. In order for a nonprofit pharmacy model to be successful, it will need the support of all of

you. Please stay tuned for more information and a community information session coming soon.

Zoning Re-write Committee Update:

As requested, the committee submitted updated regulations for self-storage facilities that addressed siting, design standards and review/approval procedures. The Town Board will review these proposals at its October meeting.

After considerable discussion, the committee re-affirmed that it cannot move forward on zoning changes on Mt. Lebanon unless and until other Town bodies - the Shaker Preservation Committee and the Town Board - establish policy, goals and strategies. The ZRC sees its role as then implementing the direction so set. The committee found itself unable to define expanded uses or even the boundaries of an overlay without an understanding of the underlying policy framework.

Members of the ZRC will participate in a meeting with Andrew Campanelli, the attorney who drafted the updated telecommunications code. As requested, the committee submitted comments to the Town Board on the draft which presumably will frame the discussion at that meeting.

County Update:

911 Tower Project update – for all 3 Towns (NL being 1)

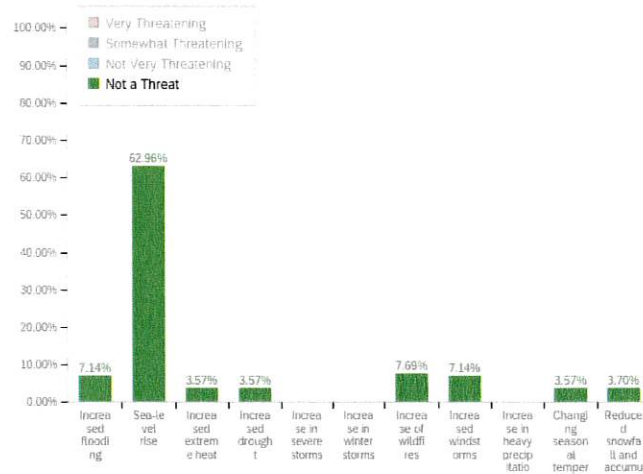
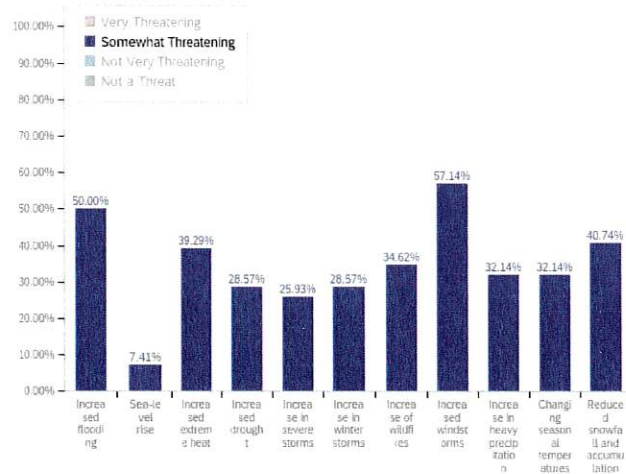
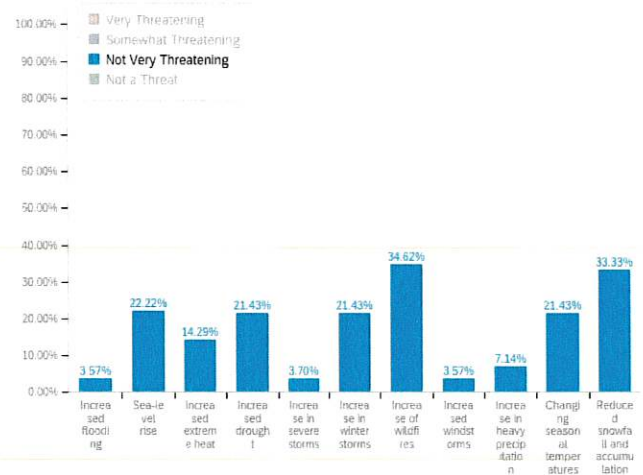
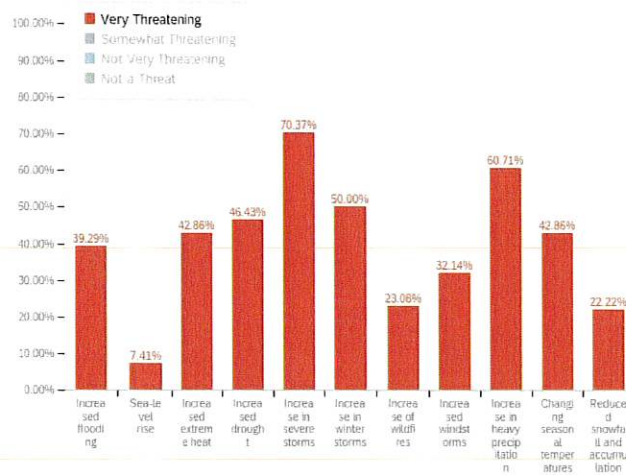
1. Towers and Communications Shelters have been ordered. Shelters should be completed mid-November and then shipped.
2. Radio and point to point to point equipment is staged. Licensing in progress.
3. Fiber with Consolidated has been ordered for the Gallatin site.
4. Met with Power Companies (NYSEG, and Central Hudson) service has been ordered, NYSEG required some work to be done at Chatham and Lebanon. Right of Ways for Chatham and Lebanon has been received.
5. One additional Bid for site work and road to be sent out once County Engineer completes review and recommended changes.
6. Site Surveys have been ordered by Tower Company for final drawing. Building permit information is being completed, Drawings etc.....

Companies to mobilize in October, exact dates still to be determined. As it gets closer we'll send out an update.

New Lebanon Results 1/4

How Threatening Each Potential Climate Hazard Might Be To Your Community

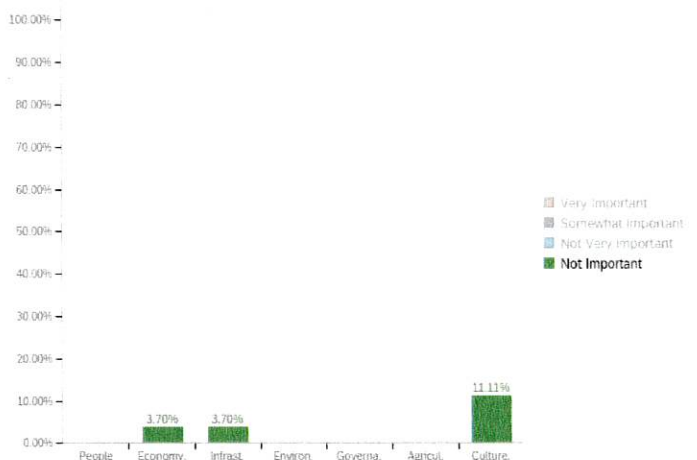
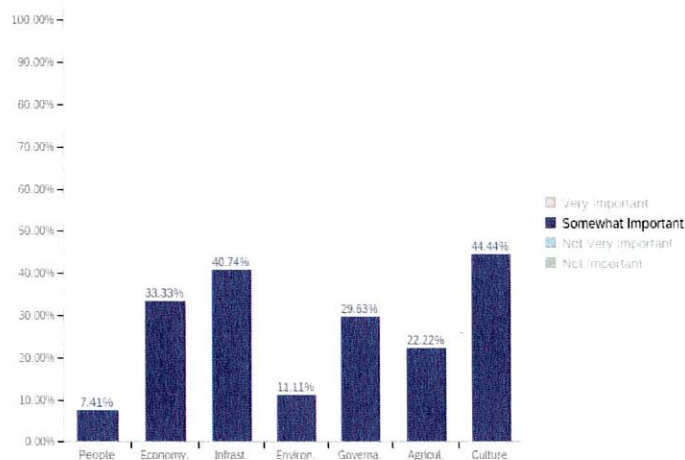
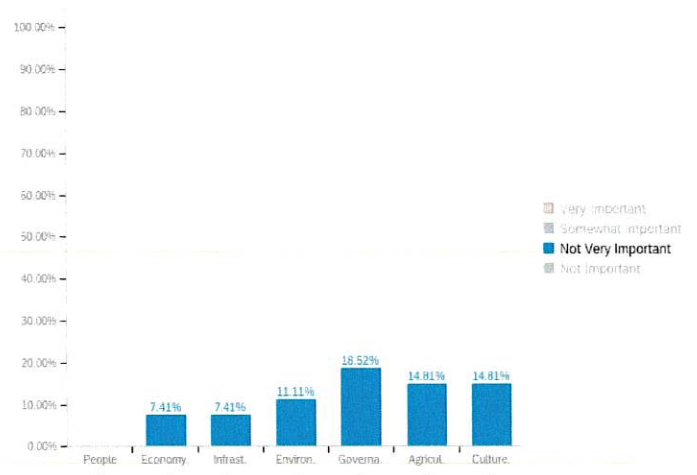
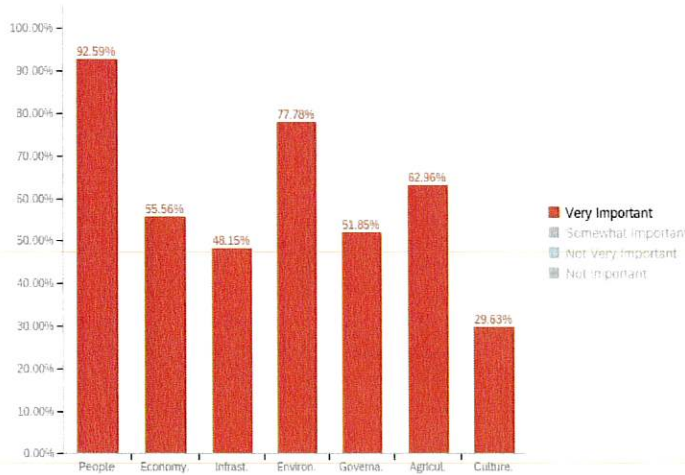
| Climate Hazards | Very Threatening & Somewhat Threatening | Not Very Threatening & Not a Threat |
|-----------------------------------|---|-------------------------------------|
| Increase in severe storms | 96.30% | 3.70% |
| Increase in heavy precipitation | 92.85% | 7.14% |
| Increased flooding | 89.29% | 10.71% |
| Increased windstorms | 89.28% | 10.71% |
| Increased extreme heat | 82.15% | 17.86% |
| Increase in winter storms | 78.57% | 21.43% |
| Increased drought | 75.00% | 25.00% |
| Changing seasonal temperatures | 75.00% | 25.00% |
| Reduced snowfall and accumulation | 62.96% | 37.03% |
| Increase of wildfires | 57.70% | 42.31% |
| Sea-level rise | 14.82% | 85.18% |



New Lebanon Results 2/4

Community Assets That Are Important To Protect From The Impacts Of Extreme Weather Events And Climate Hazards

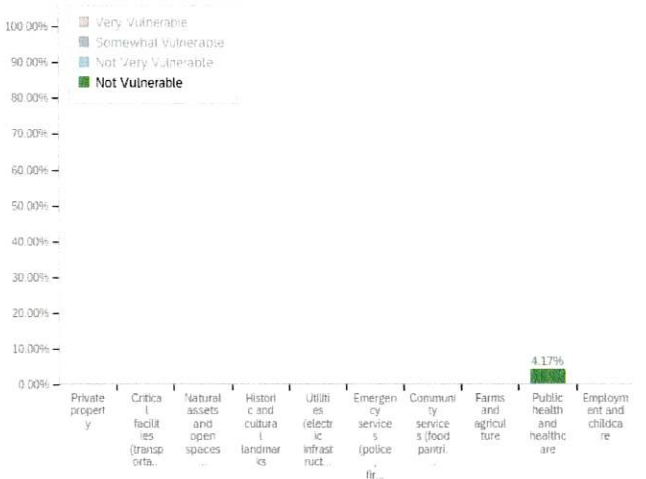
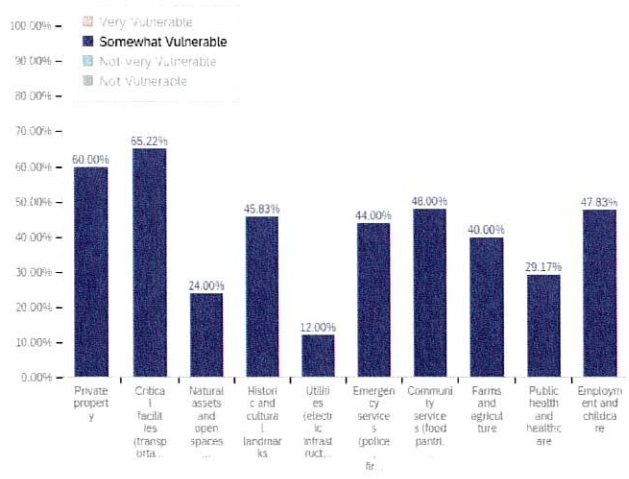
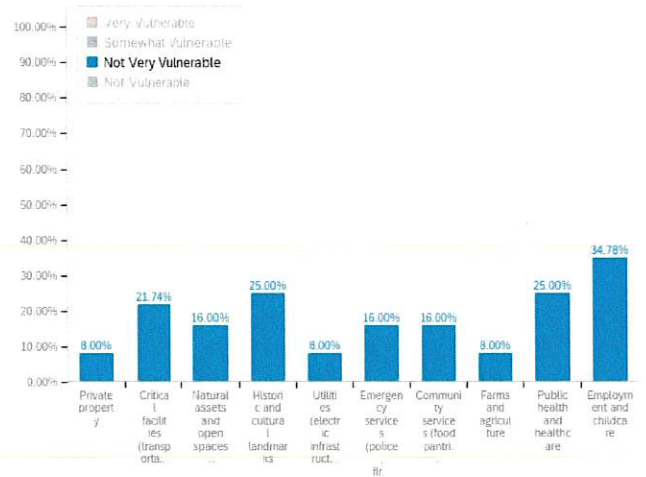
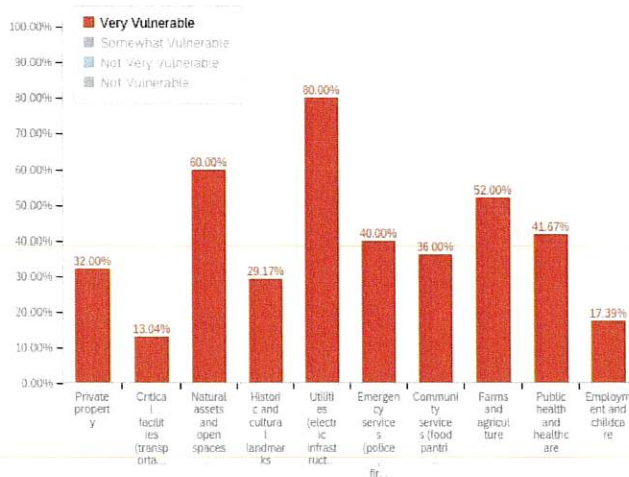
| Community Assets | Very Threatening & Somewhat Threatening | Not Very Threatening & Not a Threat |
|--|---|-------------------------------------|
| People (loss of life, health, injuries) | 100.00% | 0.00% |
| Economy (business interruptions/closures, job losses, energy disruptions, etc.) | 88.89% | 11.11% |
| Infrastructure (damage or loss of libraries, museums, historic properties, etc.) | 88.89% | 11.11% |
| Environment (damage or loss to forest, waterways, air quality, etc.) | 88.89% | 11.11% |
| Agricultural (damage or loss of farms, supply chain disruption, food security) | 85.18% | 14.81% |
| Governance (maintain order and/or provide public amenities and services) | 81.48% | 18.52% |
| Culture (ability to maintain traditions, social networks, and support systems) | 74.07% | 25.92% |



New Lebanon Results 3/4

How Vulnerable Risk Categories Are To The Impacts Of Extreme Weather Events And Climate Hazards

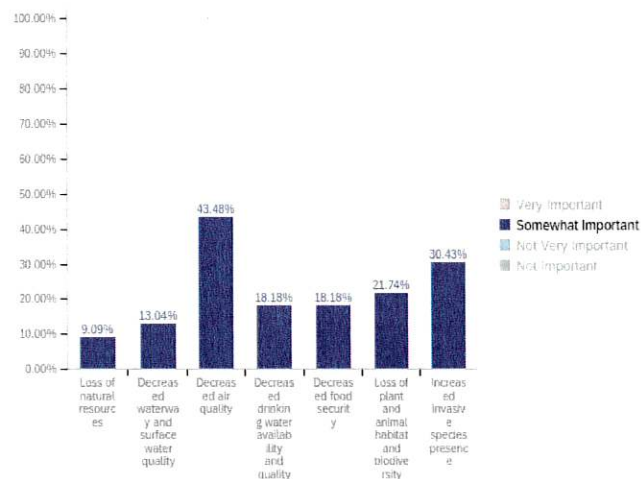
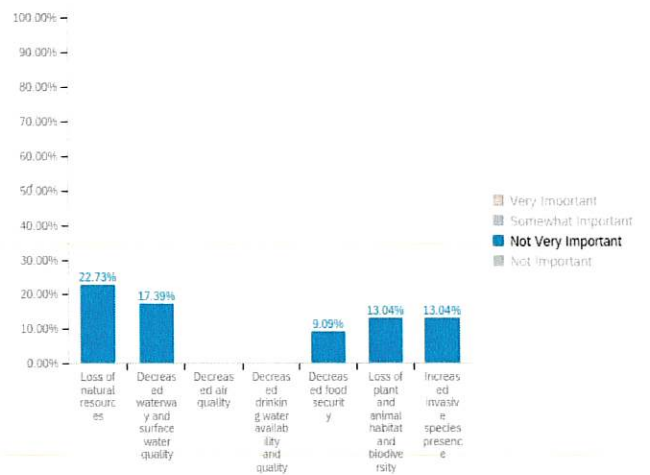
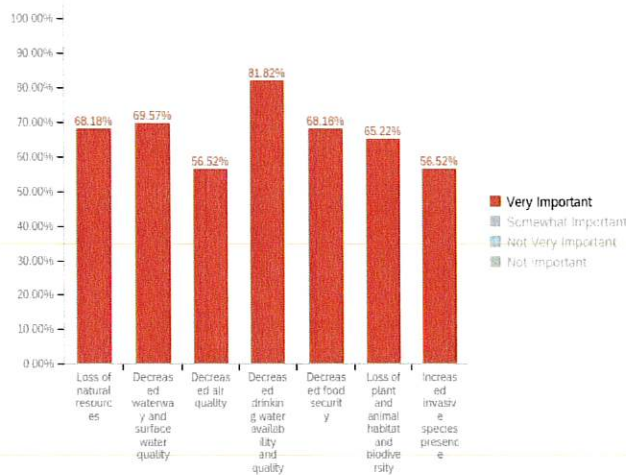
| Vulnerable Risk | Very Threatening & Somewhat Threatening | Not Very Threatening & Not a Threat |
|--|---|-------------------------------------|
| Utilities (electric infrastructure, renewable energy, water/sewer) | 92.00% | 8.00% |
| Farms and agriculture | 92.00% | 8.00% |
| Private property | 92.00% | 8.00% |
| Emergency services (police, fire, etc.) | 84.00% | 16.00% |
| Natural assets and open spaces (streams, wetlands, beaches, etc.) | 84.00% | 16.00% |
| Community services (food pantries, libraries, public agencies) | 84.00% | 16.00% |
| Critical facilities (transportation, communications, shelters, etc.) | 78.26% | 21.74% |
| Historic and cultural landmarks | 75.00% | 25.00% |
| Public health and healthcare | 70.84% | 29.17% |
| Employment and childcare | 65.22% | 34.78% |



New Lebanon Results 4/4

How Important Potential Impacts Are To Your Community

| Potential Impacts | Very Threatening & Somewhat Threatening | Not Very Threatening & Not a Threat |
|---|---|-------------------------------------|
| Decreased air quality | 100.00% | 0.00% |
| Decreased drinking water availability and quality | 100.00% | 0.00% |
| Loss of plant and animal habitat and biodiversity | 86.96% | 13.04% |
| Increased invasive species presence | 86.95% | 13.04% |
| Decreased food security | 86.36% | 13.64% |
| Decreased waterway and surface water quality | 82.61% | 17.39% |
| Loss of natural resources | 77.27% | 22.73% |

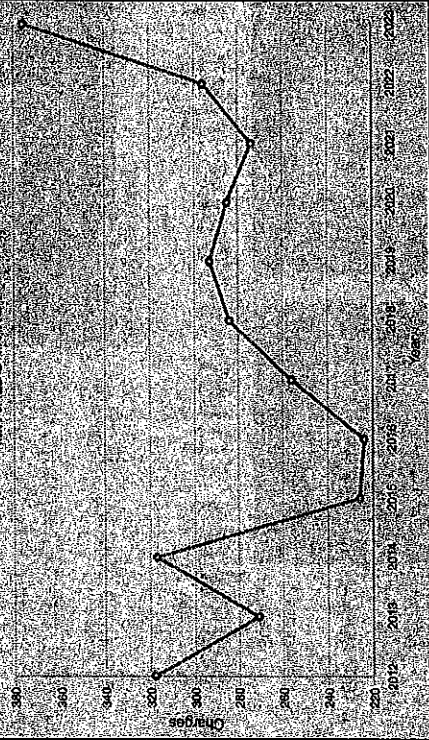


WHY SO MANY

Continued from Page 1

have the resources to be on the roads ticketing. That said, nationwide the number of driving and drunk driving traffic deaths is rising according to the National Highway Traffic Safety Administration (NHTSA). The latest NHTSA data showed a more than 18% rise in deaths from all driving causes, and a 14% increase in drunk driving deaths, in the latest year tracked (2020 to 2021). More than 13,000 people died in drunk driving crashes that year and many more were injured.

The highest percentage of drunk drivers in 2021 were in the 21 to 24 age group, followed by those aged 25 to 34. Men were four times more likely to be the drivers than women. Aggressive driving is cited by the NHTSA as a major factor in collisions. Speeding is the leading factor in crashes with impaired driving following as number two. The increase in drunk and extreme driving behavior, such as passing where prohibited, following



state Department of Transportation (DOT) to reduce the speed limit there (and elsewhere in the town) to (Speed limits are the purview of the DOT). In denying the request, the DOT has written despite the facts that "unrealistic speed limits do not invite voluntary compliance, does not reflect the behavior of the majority" and results in the unlawful behavior of the majority. More importantly, the DOT pointed out that "crashes are not accidents." They are not random, uncontrollable acts of fate but occur in predictable

patterns with recognizable risk factors and among identifiable populations." In so saying, the DOH was referring to the various forms of reckless and rude driving behaviors tracked by the NHTSA.

In moral and political philosophy the concept of a social contract refers to the actual or hypothetical compact by which citizens give up some rights and accept some obligations to ensure the safety or well-being of the group as a whole.

Writer David Booth has said that driving "is perhaps our most astonishing social contract — it depends on a certain amount of skill (hopefully) a modicum of training and most of all, trust."

Every driver agrees, at least in theory, to abide by the rules of the road: to drive soberly, honor speed limits, stop at stop signs, yield when directed, not pass on double lines. Every driver also depends for her safety on all others following those rules.

That social compact, like so many seems to be eroding, if the statistics and every day experience of us all are to be believed.

• RECYCLE • RECYCLE • RECYCLE •



Why so many county crashes?

Columbian
Paper
9/21

By DEBORAH E. JANS

GHEENT—In July, a 16-year-old was arrested for driving drunk at more than 100 miles per hour on Route 20 in New Lebanon. His Honda Civic was bursting with nine other minors packed in the car, two in the trunk. Earlier this month, two pedestrians were killed when hit by a car on Route 20 near the Lebanon Valley Speedway. Is there a trend?

Perhaps. The county's records of charges brought for impaired driving (driving while intoxicated or under the influence of drugs) suggest that 2023 may hit a high compared to all years dating back to 2012. The county is on track to charge 376 people, as compared to 296 in 2022. But, District Attorney Paul Czajka warns that ticket data can be tricky to interpret. Among other things, when law enforcement are involved with other serious crimes, they may not

Continued on Page 7



**Kneller Insurance
Agency**

Chatham
518-392-9311
Copake
518-329-3131
Valatie, NY
518-610-8164

Report on stealth - See data

Count by Speed Range Report

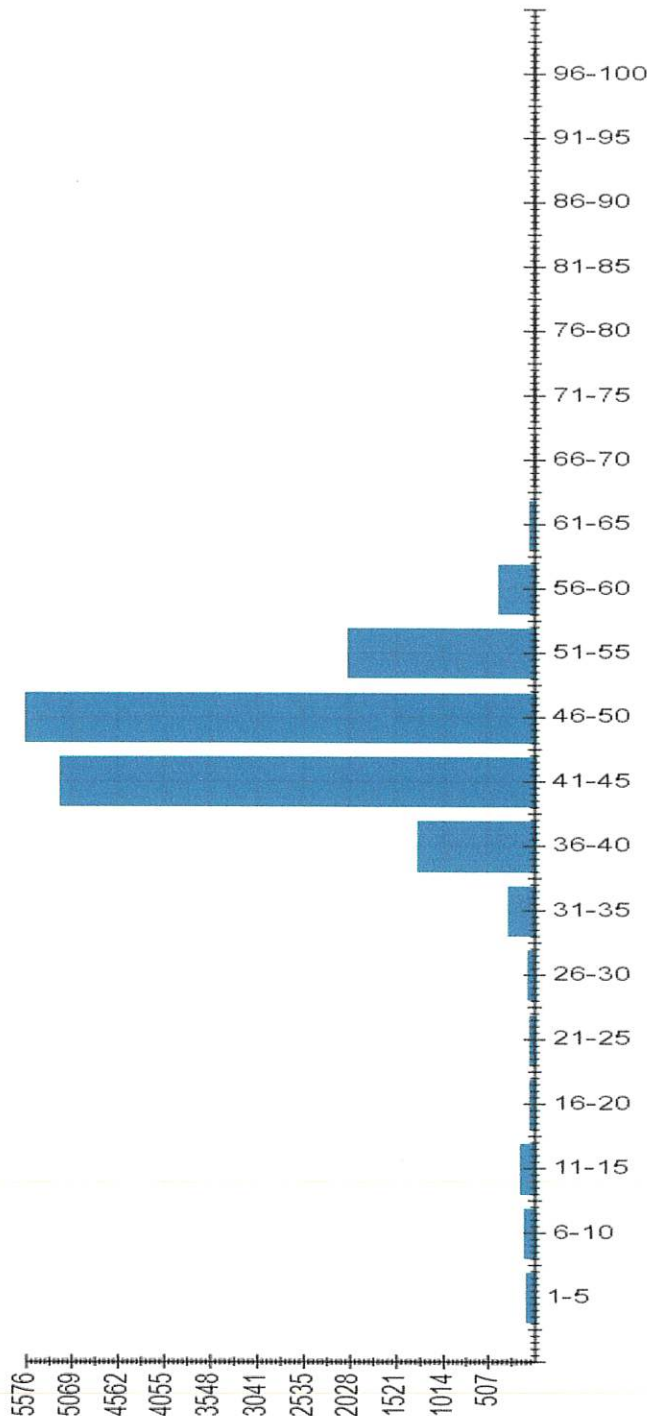
Location: West Lebanon Post office

Address: 1533 County Highway 9 West Lebanon, New York

Report period: 2023-08-01 to 2023-08-07

Count By Speed Range

| Speed (mph) | Count |
|-------------|-------|
| 1-5 | 99 |
| 6-10 | 120 |
| 11-15 | 143 |
| 16-20 | 55 |
| 21-25 | 48 |
| 26-30 | 68 |
| 31-35 | 275 |
| 36-40 | 1283 |
| 41-45 | 5203 |
| 46-50 | 5576 |
| 51-55 | 2040 |
| 56-60 | 373 |
| 61-65 | 48 |
| 66-70 | 8 |
| 71-75 | 1 |
| 76-80 | 0 |
| 81-85 | 0 |
| 86-90 | 0 |
| 91-95 | 0 |
| 96-100 | 0 |
| Total | 15340 |



■ COUNT

Generated on September 25, 2023 at 11:35 AM

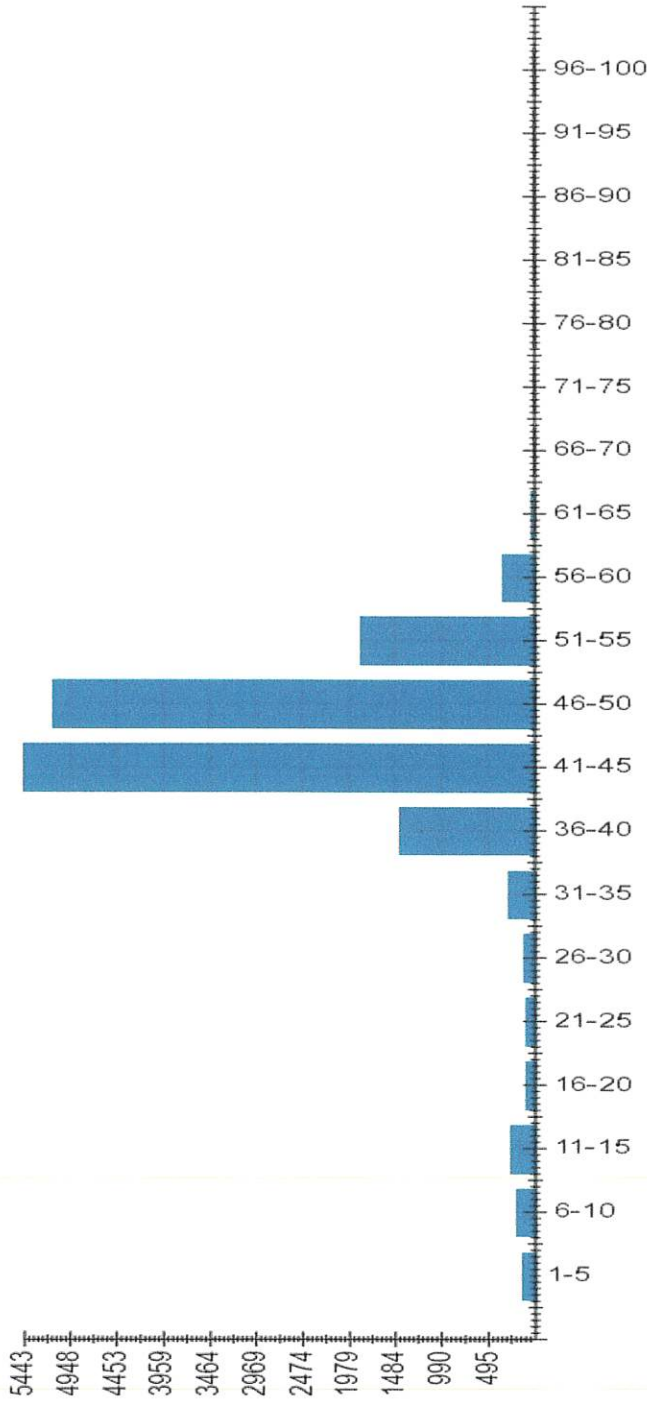
SafePace Cloud powered by Web Director®

Count by Speed Range Report

Report period: 2023-09-14 to 2023-09-21

Count By Speed Range

| Speed (mph) | Count |
|-------------|-------|
| 1-5 | 120 |
| 6-10 | 180 |
| 11-15 | 247 |
| 16-20 | 94 |
| 21-25 | 86 |
| 26-30 | 110 |
| 31-35 | 275 |
| 36-40 | 1423 |
| 41-45 | 5443 |
| 46-50 | 5127 |
| 51-55 | 1849 |
| 56-60 | 336 |
| 61-65 | 32 |
| 66-70 | 7 |
| 71-75 | 0 |
| 76-80 | 0 |
| 81-85 | 0 |
| 86-90 | 0 |
| 91-95 | 0 |
| 96-100 | 0 |
| Total | 15329 |



Sign turned on to say the speed of the vehicle and slow down feature. I monitored the sign several times. People were slowing down/breaking when the sign triggered. School was open- you can compare number of vehicles to the time of day- see custom Report.

Location: West Lebanon Post office

Address: 1533 County Highway 9 West Lebanon, New York

You can compare to Sept report - this is from same location - with sign on to tell the vehicle their speed

My Custom Report

Location: West Lebanon Post office
 Address: 1533 County Highway 9 West Lebanon, New York
 Speed Limit: From schedule 45 mph

Report Period: 2023-09-14 to 2023-09-21
 Total Vehicle Count: 15329

| Date/Time | Total Vehicle | # of Speed Violations | % of Speed Violations | Max Speed (mph) |
|---------------------|---------------|-----------------------|-----------------------|-----------------|
| 2023-09-14 00:00:00 | 14 | 12 | 86 % | 58 |
| 2023-09-14 01:00:00 | 5 | 2 | 40 % | 55 |
| 2023-09-14 02:00:00 | 8 | 3 | 38 % | 53 |
| 2023-09-14 03:00:00 | 4 | 2 | 50 % | 52 |
| 2023-09-14 04:00:00 | 24 | 15 | 63 % | 59 |
| 2023-09-14 05:00:00 | 48 | 33 | 69 % | 58 |
| 2023-09-14 06:00:00 | 88 | 52 | 59 % | 64 |
| 2023-09-14 07:00:00 | 129 | 88 | 68 % | 60 |
| 2023-09-14 08:00:00 | 108 | 48 | 44 % | 57 |
| 2023-09-14 09:00:00 | 96 | 62 | 65 % | 58 |
| 2023-09-14 10:00:00 | 102 | 65 | 64 % | 58 |
| 2023-09-14 11:00:00 | 150 | 68 | 45 % | 58 |
| 2023-09-14 12:00:00 | 104 | 46 | 44 % | 60 |
| 2023-09-14 13:00:00 | 124 | 55 | 44 % | 62 |
| 2023-09-14 14:00:00 | 115 | 50 | 43 % | 56 |
| 2023-09-14 15:00:00 | 152 | 65 | 43 % | 59 |
| 2023-09-14 16:00:00 | 157 | 76 | 48 % | 58 |
| 2023-09-14 17:00:00 | 114 | 75 | 66 % | 60 |
| 2023-09-14 18:00:00 | 102 | 65 | 64 % | 58 |
| 2023-09-14 19:00:00 | 113 | 56 | 50 % | 57 |
| 2023-09-14 20:00:00 | 60 | 33 | 55 % | 59 |
| 2023-09-14 21:00:00 | 32 | 16 | 50 % | 51 |
| 2023-09-14 22:00:00 | 18 | 7 | 39 % | 52 |
| 2023-09-14 23:00:00 | 17 | 11 | 65 % | 55 |
| 2023-09-15 00:00:00 | 33 | 18 | 55 % | 55 |
| 2023-09-15 01:00:00 | 5 | 4 | 80 % | 58 |
| 2023-09-15 02:00:00 | 12 | 7 | 58 % | 53 |
| 2023-09-15 03:00:00 | 5 | 4 | 80 % | 50 |
| 2023-09-15 04:00:00 | 21 | 16 | 76 % | 58 |

4

| | | | | |
|---------------------|-----|-----|---------|----|
| 2023-09-15 05:00:00 | 39 | 23 | 59 % | 57 |
| 2023-09-15 06:00:00 | 101 | 50 | 50 % | 58 |
| 2023-09-15 07:00:00 | 111 | 70 | 63 % | 62 |
| 2023-09-15 08:00:00 | 153 | 76 | 50 % | 60 |
| 2023-09-15 09:00:00 | 152 | 83 | 55 % | 59 |
| 2023-09-15 10:00:00 | 142 | 80 | 56 % | 58 |
| 2023-09-15 11:00:00 | 143 | 74 | 52 % | 58 |
| 2023-09-15 12:00:00 | 159 | 94 | 59 % | 60 |
| 2023-09-15 13:00:00 | 170 | 74 | 44 % | 56 |
| 2023-09-15 14:00:00 | 124 | 57 | 46 % | 57 |
| 2023-09-15 15:00:00 | 148 | 69 | 47 % | 58 |
| 2023-09-15 16:00:00 | 141 | 74 | 52 % | 58 |
| 2023-09-15 17:00:00 | 171 | 91 | 53 % | 59 |
| 2023-09-15 18:00:00 | 135 | 72 | 53 % | 58 |
| 2023-09-15 19:00:00 | 106 | 53 | 50 % | 60 |
| 2023-09-15 20:00:00 | 94 | 54 | 57 % | 60 |
| 2023-09-15 21:00:00 | 67 | 30 | 45 % | 58 |
| 2023-09-15 22:00:00 | 48 | 32 | 67 % | 55 |
| 2023-09-15 23:00:00 | 33 | 24 | 73 % | 58 |
| 2023-09-16 00:00:00 | 31 | 14 | 45 % | 58 |
| 2023-09-16 01:00:00 | 10 | 6 | 60 % | 52 |
| 2023-09-16 02:00:00 | 13 | 10 | 77 % | 59 |
| 2023-09-16 03:00:00 | 1 | 1 | H 100 % | 48 |
| 2023-09-16 13:00:00 | 89 | 51 | 57 % | 56 |
| 2023-09-16 14:00:00 | 148 | 100 | 68 % | 61 |
| 2023-09-16 15:00:00 | 151 | 89 | 59 % | 57 |
| 2023-09-16 16:00:00 | 166 | 89 | 54 % | 63 |
| 2023-09-16 17:00:00 | 168 | 117 | 70 % | 60 |
| 2023-09-16 18:00:00 | 92 | 57 | 62 % | 59 |
| 2023-09-16 19:00:00 | 94 | 40 | 43 % | 54 |
| 2023-09-16 20:00:00 | 72 | 39 | 54 % | 63 |
| 2023-09-16 21:00:00 | 30 | 17 | 57 % | 57 |
| 2023-09-16 22:00:00 | 43 | 23 | 53 % | 57 |

47
5

| | | | | |
|---------------------|-----|-----|-----|----|
| 2023-09-16 23:00:00 | 35 | 20 | 57% | 66 |
| 2023-09-17 00:00:00 | 26 | 16 | 62% | 63 |
| 2023-09-17 01:00:00 | 15 | 11 | 73% | 58 |
| 2023-09-17 02:00:00 | 11 | 6 | 55% | 58 |
| 2023-09-17 03:00:00 | 2 | 1 | 50% | 45 |
| 2023-09-17 04:00:00 | 4 | 1 | 25% | 48 |
| 2023-09-17 05:00:00 | 18 | 12 | 67% | 54 |
| 2023-09-17 06:00:00 | 29 | 20 | 69% | 65 |
| 2023-09-17 07:00:00 | 44 | 34 | 77% | 63 |
| 2023-09-17 08:00:00 | 76 | 58 | 76% | 64 |
| 2023-09-17 09:00:00 | 88 | 65 | 74% | 56 |
| 2023-09-17 10:00:00 | 140 | 91 | 65% | 59 |
| 2023-09-17 11:00:00 | 134 | 78 | 58% | 60 |
| 2023-09-17 12:00:00 | 170 | 99 | 58% | 54 |
| 2023-09-17 13:00:00 | 126 | 74 | 59% | 57 |
| 2023-09-17 14:00:00 | 159 | 95 | 60% | 58 |
| 2023-09-17 15:00:00 | 187 | 111 | 59% | 56 |
| 2023-09-17 16:00:00 | 128 | 77 | 60% | 57 |
| 2023-09-17 17:00:00 | 178 | 94 | 53% | 56 |
| 2023-09-17 18:00:00 | 103 | 51 | 50% | 55 |
| 2023-09-17 19:00:00 | 83 | 39 | 47% | 58 |
| 2023-09-17 20:00:00 | 68 | 42 | 62% | 57 |
| 2023-09-17 21:00:00 | 34 | 23 | 68% | 63 |
| 2023-09-17 22:00:00 | 36 | 19 | 53% | 57 |
| 2023-09-17 23:00:00 | 21 | 12 | 57% | 53 |
| 2023-09-18 00:00:00 | 12 | 6 | 50% | 50 |
| 2023-09-18 01:00:00 | 8 | 1 | 13% | 48 |
| 2023-09-18 02:00:00 | 10 | 3 | 30% | 53 |
| 2023-09-18 03:00:00 | 2 | 1 | 50% | 51 |
| 2023-09-18 04:00:00 | 22 | 7 | 32% | 58 |
| 2023-09-18 05:00:00 | 35 | 16 | 46% | 57 |
| 2023-09-18 06:00:00 | 131 | 58 | 44% | 66 |
| 2023-09-18 07:00:00 | 187 | 100 | 53% | 58 |

| | | | | |
|---------------------|-----|----|--------|------|
| 2023-09-18 08:00:00 | 183 | 64 | 35% | 60 |
| 2023-09-18 09:00:00 | 135 | 63 | 47% | 58 |
| 2023-09-18 10:00:00 | 107 | 51 | 48% | 63 |
| 2023-09-18 11:00:00 | 141 | 76 | 54% | 57 |
| 2023-09-18 12:00:00 | 123 | 65 | 53% | 60 |
| 2023-09-18 13:00:00 | 125 | 69 | 55% | 58 |
| 2023-09-18 14:00:00 | 151 | 61 | 40% | 57 |
| 2023-09-18 15:00:00 | 122 | 53 | 43% | 62 |
| 2023-09-18 16:00:00 | 150 | 63 | 42% | 58 |
| 2023-09-18 17:00:00 | 131 | 59 | 45% | 60 |
| 2023-09-18 18:00:00 | 105 | 56 | 53% | 58 |
| 2023-09-18 19:00:00 | 69 | 30 | 43% | 59 |
| 2023-09-18 20:00:00 | 63 | 21 | 33% | 55 |
| 2023-09-18 21:00:00 | 35 | 14 | 40% | 62 |
| 2023-09-18 22:00:00 | 21 | 6 | 29% | 62 |
| 2023-09-18 23:00:00 | 13 | 8 | 62% | 58 |
| 2023-09-19 00:00:00 | 24 | 9 | 38% | 53 |
| 2023-09-19 01:00:00 | 9 | 3 | 33% | 57 |
| 2023-09-19 02:00:00 | 7 | 1 | 14% | 51 |
| 2023-09-19 03:00:00 | 4 | 4 | H 100% | 63 |
| 2023-09-19 04:00:00 | 18 | 6 | 33% | 54 |
| 2023-09-19 05:00:00 | 35 | 22 | 63% | 55 |
| 2023-09-19 06:00:00 | 115 | 64 | 56% | H 70 |
| 2023-09-19 07:00:00 | 182 | 97 | 53% | 57 |
| 2023-09-19 08:00:00 | 101 | 41 | 41% | 56 |
| 2023-09-19 09:00:00 | 131 | 62 | 47% | 55 |
| 2023-09-19 10:00:00 | 71 | 44 | 62% | 59 |
| 2023-09-19 11:00:00 | 115 | 59 | 51% | 60 |
| 2023-09-19 12:00:00 | 104 | 58 | 56% | 57 |
| 2023-09-19 13:00:00 | 124 | 54 | 44% | 55 |
| 2023-09-19 14:00:00 | 124 | 63 | 51% | 58 |
| 2023-09-19 15:00:00 | 102 | 59 | 58% | 58 |
| 2023-09-19 16:00:00 | 188 | 96 | 51% | 57 |



| | | | | |
|---------------------|-----|----|------|----|
| 2023-09-19 17:00:00 | 132 | 80 | 61 % | 57 |
| 2023-09-19 18:00:00 | 122 | 74 | 61 % | 62 |
| 2023-09-19 19:00:00 | 73 | 36 | 49 % | 60 |
| 2023-09-19 20:00:00 | 40 | 24 | 60 % | 56 |
| 2023-09-19 21:00:00 | 52 | 29 | 56 % | 55 |
| 2023-09-19 22:00:00 | 28 | 14 | 50 % | 57 |
| 2023-09-19 23:00:00 | 13 | 9 | 69 % | 57 |
| 2023-09-20 00:00:00 | 9 | 3 | 33 % | 52 |
| 2023-09-20 01:00:00 | 6 | 3 | 50 % | 53 |
| 2023-09-20 02:00:00 | 5 | 2 | 40 % | 51 |
| 2023-09-20 03:00:00 | 11 | 7 | 64 % | 55 |
| 2023-09-20 04:00:00 | 19 | 10 | 53 % | 65 |
| 2023-09-20 05:00:00 | 40 | 27 | 68 % | 57 |
| 2023-09-20 06:00:00 | 79 | 38 | 48 % | 60 |
| 2023-09-20 07:00:00 | 157 | 93 | 59 % | 69 |
| 2023-09-20 08:00:00 | 120 | 66 | 55 % | 63 |
| 2023-09-20 09:00:00 | 103 | 61 | 59 % | 63 |
| 2023-09-20 10:00:00 | 131 | 77 | 59 % | 57 |
| 2023-09-20 11:00:00 | 127 | 73 | 57 % | 60 |
| 2023-09-20 12:00:00 | 94 | 54 | 57 % | 57 |
| 2023-09-20 13:00:00 | 146 | 80 | 55 % | 56 |
| 2023-09-20 14:00:00 | 125 | 66 | 53 % | 62 |
| 2023-09-20 15:00:00 | 139 | 63 | 45 % | 61 |
| 2023-09-20 16:00:00 | 133 | 58 | 44 % | 57 |
| 2023-09-20 17:00:00 | 158 | 88 | 56 % | 57 |
| 2023-09-20 18:00:00 | 122 | 71 | 58 % | 60 |
| 2023-09-20 19:00:00 | 100 | 48 | 48 % | 60 |
| 2023-09-20 20:00:00 | 62 | 28 | 45 % | 60 |
| 2023-09-20 21:00:00 | 59 | 32 | 54 % | 57 |
| 2023-09-20 22:00:00 | 43 | 23 | 53 % | 66 |
| 2023-09-20 23:00:00 | 17 | 13 | 76 % | 57 |
| 2023-09-21 00:00:00 | 15 | 6 | 40 % | 57 |
| 2023-09-21 01:00:00 | 12 | 4 | 33 % | 54 |

| | | | | |
|---------------------|------------|-----------|-----------|----|
| 2023-09-21 02:00:00 | 8 | 4 | 50 % | 57 |
| 2023-09-21 03:00:00 | 3 | 3 | H 100 % | 51 |
| 2023-09-21 04:00:00 | 22 | 11 | 50 % | 62 |
| 2023-09-21 05:00:00 | 43 | 28 | 65 % | 60 |
| 2023-09-21 06:00:00 | 100 | 48 | 48 % | 66 |
| 2023-09-21 07:00:00 | H 197 | H 121 | 61 % | 63 |
| 2023-09-21 08:00:00 | 135 | 73 | 54 % | 58 |
| 2023-09-21 09:00:00 | 165 | 93 | 56 % | 66 |
| 2023-09-21 10:00:00 | 115 | 74 | 64 % | 60 |
| 2023-09-21 11:00:00 | 106 | 49 | 46 % | 56 |
| 2023-09-21 12:00:00 | 139 | 82 | 59 % | 60 |
| 2023-09-21 13:00:00 | 122 | 64 | 52 % | 64 |
| 2023-09-21 14:00:00 | 133 | 67 | 50 % | 58 |
| 2023-09-21 15:00:00 | 159 | 78 | 49 % | 56 |
| 2023-09-21 16:00:00 | 167 | 81 | 49 % | 60 |
| 2023-09-21 17:00:00 | 144 | 68 | 47 % | 57 |
| 2023-09-21 18:00:00 | 128 | 54 | 42 % | 60 |
| 2023-09-21 19:00:00 | 50 | 17 | 34 % | 53 |
| 2023-09-21 20:00:00 | 63 | 29 | 46 % | 57 |
| 2023-09-21 21:00:00 | 47 | 28 | 60 % | 61 |
| 2023-09-21 22:00:00 | 23 | 10 | 43 % | 57 |
| 2023-09-21 23:00:00 | 13 | 8 | 62 % | 53 |
| Summary | SUM: 15329 | SUM: 8179 | AVG: 54 % | |

H - highest value in the column, bolded H is highest H value in report
 ** "n/a" - means the sign did not collect any data at the time stipulated in the report. "n/a" values are NOT included in calculations.

Sign turned off -

see if behavior reverts to prior to sign

See custom report for times of day

Location: West Lebanon Post office

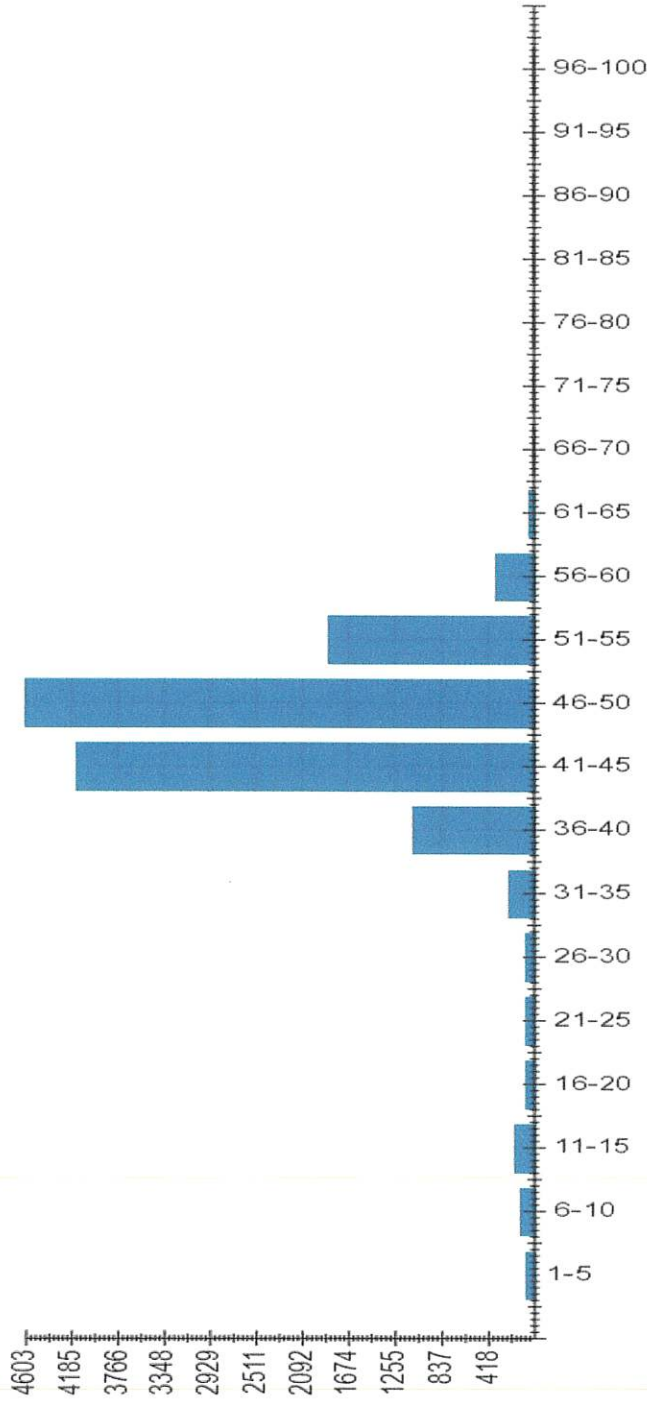
Address: 1533 County Highway 9 West Lebanon, New York

Count by Speed Range Report

Report period: 2023-09-28 to 2023-10-04

Count By Speed Range

| Speed (mph) | Count |
|-------------|-------|
| 1-5 | 69 |
| 6-10 | 134 |
| 11-15 | 179 |
| 16-20 | 67 |
| 21-25 | 79 |
| 26-30 | 81 |
| 31-35 | 227 |
| 36-40 | 1084 |
| 41-45 | 4129 |
| 46-50 | 4603 |
| 51-55 | 1849 |
| 56-60 | 353 |
| 61-65 | 35 |
| 66-70 | 11 |
| 71-75 | 2 |
| 76-80 | 0 |
| 81-85 | 0 |
| 86-90 | 0 |
| 91-95 | 0 |
| 96-100 | 0 |
| Total | 12902 |



COUNT

Generated on October 04, 2023 at 9:45 AM

SafePace Cloud powered by Web Director®

My Custom Report

Location: West Lebanon Post office
Address: 1533 County Highway 9 West Lebanon, New York
Speed Limit: From schedule 45 mph
Report Period: 2023-09-28 to 2023-10-04
Total Vehicle Count: 12902

| Date/Time | Total Vehicle | # of Speed Violations | % of Speed Violations | Max Speed (mph) |
|---------------------|---------------|-----------------------|-----------------------|-----------------|
| 2023-09-28 00:00:00 | 16 | 10 | 63 % | 56 |
| 2023-09-28 01:00:00 | 4 | 2 | 50 % | 50 |
| 2023-09-28 02:00:00 | 6 | 4 | 67 % | 56 |
| 2023-09-28 03:00:00 | 6 | 3 | 50 % | 52 |
| 2023-09-28 04:00:00 | 22 | 15 | 68 % | 63 |
| 2023-09-28 05:00:00 | 42 | 28 | 67 % | 59 |
| 2023-09-28 06:00:00 | 132 | 86 | 65 % | 66 |
| 2023-09-28 07:00:00 | 146 | 104 | 71 % | 70 |
| 2023-09-28 08:00:00 | 146 | 61 | 42 % | 60 |
| 2023-09-28 09:00:00 | 115 | 63 | 55 % | 62 |
| 2023-09-28 10:00:00 | 116 | 71 | 61 % | 58 |
| 2023-09-28 11:00:00 | 144 | 83 | 58 % | 60 |
| 2023-09-28 12:00:00 | 138 | 83 | 60 % | 58 |
| 2023-09-28 13:00:00 | 141 | 72 | 51 % | 60 |
| 2023-09-28 14:00:00 | 145 | 55 | 38 % | 59 |
| 2023-09-28 15:00:00 | 133 | 48 | 36 % | 55 |
| 2023-09-28 16:00:00 | 125 | 73 | 58 % | 62 |
| 2023-09-28 17:00:00 | 137 | 86 | 63 % | 60 |
| 2023-09-28 18:00:00 | 113 | 65 | 58 % | 59 |
| 2023-09-28 19:00:00 | 86 | 53 | 62 % | 58 |
| 2023-09-28 20:00:00 | 77 | 46 | 60 % | 66 |
| 2023-09-28 21:00:00 | 53 | 27 | 51 % | 70 |
| 2023-09-28 22:00:00 | 27 | 14 | 52 % | 55 |
| 2023-09-28 23:00:00 | 23 | 14 | 61 % | 52 |
| 2023-09-29 00:00:00 | 11 | 6 | 55 % | 58 |
| 2023-09-29 01:00:00 | 14 | 8 | 57 % | 53 |
| 2023-09-29 02:00:00 | 7 | 3 | 43 % | 52 |
| 2023-09-29 03:00:00 | 6 | 5 | 83 % | 67 |
| 2023-09-29 04:00:00 | 22 | 14 | 64 % | 62 |

| | | | | |
|---------------------|-----|-------|-----|----|
| 2023-09-29 05:00:00 | 25 | 15 | 60% | 57 |
| 2023-09-29 06:00:00 | 87 | 45 | 52% | 63 |
| 2023-09-29 07:00:00 | 118 | 74 | 63% | 59 |
| 2023-09-29 08:00:00 | 145 | 56 | 39% | 55 |
| 2023-09-29 09:00:00 | 100 | 58 | 58% | 58 |
| 2023-09-29 10:00:00 | 161 | 80 | 50% | 65 |
| 2023-09-29 11:00:00 | 151 | 69 | 46% | 56 |
| 2023-09-29 12:00:00 | 134 | 90 | 67% | 58 |
| 2023-09-29 13:00:00 | 154 | 71 | 46% | 58 |
| 2023-09-29 14:00:00 | 147 | 93 | 63% | 63 |
| 2023-09-29 15:00:00 | 164 | 90 | 55% | 58 |
| 2023-09-29 16:00:00 | 151 | 86 | 57% | 59 |
| 2023-09-29 17:00:00 | 192 | 117 | 61% | 63 |
| 2023-09-29 18:00:00 | 120 | 78 | 65% | 62 |
| 2023-09-29 19:00:00 | 94 | 63 | 67% | 55 |
| 2023-09-29 20:00:00 | 46 | 33 | 72% | 62 |
| 2023-09-29 21:00:00 | 57 | 31 | 54% | 60 |
| 2023-09-29 22:00:00 | 47 | 30 | 64% | 62 |
| 2023-09-29 23:00:00 | 21 | 13 | 62% | 57 |
| 2023-09-30 00:00:00 | 15 | 10 | 67% | 55 |
| 2023-09-30 01:00:00 | 11 | 3 | 27% | 52 |
| 2023-09-30 02:00:00 | 13 | 7 | 54% | 54 |
| 2023-09-30 03:00:00 | 4 | 1 | 25% | 49 |
| 2023-09-30 04:00:00 | 5 | 2 | 40% | 57 |
| 2023-09-30 05:00:00 | 16 | 10 | 63% | 60 |
| 2023-09-30 06:00:00 | 26 | 20 | 77% | 57 |
| 2023-09-30 07:00:00 | 50 | 31 | 62% | 58 |
| 2023-09-30 08:00:00 | 96 | 67 | 70% | 66 |
| 2023-09-30 09:00:00 | 116 | 74 | 64% | 58 |
| 2023-09-30 10:00:00 | 115 | 61 | 53% | 60 |
| 2023-09-30 11:00:00 | 156 | 103 | 66% | 63 |
| 2023-09-30 12:00:00 | 148 | 114 | 77% | 61 |
| 2023-09-30 13:00:00 | 203 | H 138 | 68% | 60 |

| | | | | |
|---------------------|-------|-----|---------|----|
| 2023-09-30 14:00:00 | 188 | 135 | 72 % | 61 |
| 2023-09-30 15:00:00 | 97 | 64 | 66 % | 57 |
| 2023-09-30 16:00:00 | 132 | 87 | 66 % | 58 |
| 2023-09-30 17:00:00 | 156 | 112 | 72 % | 60 |
| 2023-09-30 18:00:00 | 120 | 82 | 68 % | 62 |
| 2023-09-30 19:00:00 | 164 | 96 | 59 % | 63 |
| 2023-09-30 20:00:00 | 144 | 68 | 47 % | 57 |
| 2023-09-30 21:00:00 | 73 | 43 | 59 % | 57 |
| 2023-09-30 22:00:00 | 59 | 32 | 54 % | 54 |
| 2023-09-30 23:00:00 | 31 | 16 | 52 % | 57 |
| 2023-10-01 00:00:00 | 15 | 7 | 47 % | 53 |
| 2023-10-01 01:00:00 | 15 | 10 | 67 % | 50 |
| 2023-10-01 02:00:00 | 13 | 5 | 38 % | 57 |
| 2023-10-01 03:00:00 | 2 | 2 | H 100 % | 54 |
| 2023-10-01 04:00:00 | 3 | 2 | 67 % | 48 |
| 2023-10-01 05:00:00 | 14 | 6 | 43 % | 50 |
| 2023-10-01 06:00:00 | 24 | 15 | 63 % | 59 |
| 2023-10-01 07:00:00 | 55 | 42 | 76 % | 58 |
| 2023-10-01 08:00:00 | 61 | 54 | 89 % | 63 |
| 2023-10-01 09:00:00 | 85 | 61 | 72 % | 58 |
| 2023-10-01 10:00:00 | 119 | 73 | 61 % | 59 |
| 2023-10-01 11:00:00 | 144 | 100 | 69 % | 60 |
| 2023-10-01 12:00:00 | 133 | 70 | 53 % | 58 |
| 2023-10-01 13:00:00 | H 207 | 96 | 46 % | 57 |
| 2023-10-01 14:00:00 | 198 | 114 | 58 % | 55 |
| 2023-10-01 15:00:00 | 192 | 109 | 57 % | 58 |
| 2023-10-01 16:00:00 | 117 | 61 | 52 % | 56 |
| 2023-10-01 17:00:00 | 157 | 113 | 72 % | 64 |
| 2023-10-01 18:00:00 | 135 | 86 | 64 % | 60 |
| 2023-10-01 19:00:00 | 109 | 52 | 48 % | 60 |
| 2023-10-01 20:00:00 | 45 | 31 | 69 % | 60 |
| 2023-10-01 21:00:00 | 42 | 28 | 67 % | 59 |
| 2023-10-01 22:00:00 | 35 | 26 | 74 % | 67 |

| | | | | |
|---------------------|-----|----|------|------|
| 2023-10-01 23:00:00 | 18 | 9 | 50 % | 50 |
| 2023-10-02 00:00:00 | 9 | 7 | 78 % | 54 |
| 2023-10-02 01:00:00 | 4 | 1 | 25 % | 51 |
| 2023-10-02 02:00:00 | 7 | 5 | 71 % | 50 |
| 2023-10-02 03:00:00 | 7 | 4 | 57 % | 50 |
| 2023-10-02 04:00:00 | 25 | 15 | 60 % | 58 |
| 2023-10-02 05:00:00 | 42 | 32 | 76 % | 67 |
| 2023-10-02 06:00:00 | 113 | 77 | 68 % | H 71 |
| 2023-10-02 07:00:00 | 117 | 76 | 65 % | 59 |
| 2023-10-02 08:00:00 | 148 | 81 | 55 % | 67 |
| 2023-10-02 09:00:00 | 126 | 71 | 56 % | 60 |
| 2023-10-02 10:00:00 | 99 | 46 | 46 % | 57 |
| 2023-10-02 11:00:00 | 114 | 66 | 58 % | 55 |
| 2023-10-02 12:00:00 | 118 | 63 | 53 % | 55 |
| 2023-10-02 13:00:00 | 86 | 49 | 57 % | 55 |
| 2023-10-02 14:00:00 | 142 | 65 | 46 % | 57 |
| 2023-10-02 15:00:00 | 130 | 52 | 40 % | 58 |
| 2023-10-02 16:00:00 | 169 | 82 | 49 % | 57 |
| 2023-10-02 17:00:00 | 149 | 90 | 60 % | 59 |
| 2023-10-02 18:00:00 | 137 | 77 | 56 % | H 71 |
| 2023-10-02 19:00:00 | 81 | 50 | 62 % | 57 |
| 2023-10-02 20:00:00 | 60 | 35 | 58 % | 55 |
| 2023-10-02 21:00:00 | 26 | 16 | 62 % | 59 |
| 2023-10-02 22:00:00 | 16 | 10 | 63 % | 57 |
| 2023-10-02 23:00:00 | 21 | 13 | 62 % | 66 |
| 2023-10-03 00:00:00 | 14 | 10 | 71 % | 53 |
| 2023-10-03 01:00:00 | 5 | 3 | 60 % | 55 |
| 2023-10-03 02:00:00 | 7 | 6 | 86 % | 53 |
| 2023-10-03 03:00:00 | 5 | 4 | 80 % | 57 |
| 2023-10-03 04:00:00 | 21 | 15 | 71 % | 57 |
| 2023-10-03 05:00:00 | 48 | 30 | 63 % | 59 |
| 2023-10-03 06:00:00 | 80 | 43 | 54 % | 63 |
| 2023-10-03 07:00:00 | 153 | 95 | 62 % | 57 |

| | | | | |
|---------------------|------------|-----------|-----------|----|
| 2023-10-03 08:00:00 | 152 | 85 | 56 % | 60 |
| 2023-10-03 09:00:00 | 147 | 87 | 59 % | 60 |
| 2023-10-03 10:00:00 | 121 | 68 | 56 % | 65 |
| 2023-10-03 11:00:00 | 92 | 37 | 40 % | 55 |
| 2023-10-03 12:00:00 | 162 | 86 | 53 % | 60 |
| 2023-10-03 13:00:00 | 142 | 75 | 53 % | 60 |
| 2023-10-03 14:00:00 | 138 | 75 | 54 % | 58 |
| 2023-10-03 15:00:00 | 179 | 79 | 44 % | 60 |
| 2023-10-03 16:00:00 | 194 | 97 | 50 % | 57 |
| 2023-10-03 17:00:00 | 112 | 65 | 58 % | 60 |
| 2023-10-03 18:00:00 | 86 | 51 | 59 % | 57 |
| 2023-10-03 19:00:00 | 91 | 55 | 60 % | 56 |
| 2023-10-03 20:00:00 | 69 | 46 | 67 % | 57 |
| 2023-10-03 21:00:00 | 56 | 34 | 61 % | 60 |
| 2023-10-03 22:00:00 | 19 | 15 | 79 % | 53 |
| 2023-10-03 23:00:00 | 19 | 12 | 63 % | 60 |
| 2023-10-04 00:00:00 | 7 | 5 | 71 % | 53 |
| 2023-10-04 01:00:00 | 10 | 7 | 70 % | 55 |
| 2023-10-04 02:00:00 | 5 | 3 | 60 % | 50 |
| 2023-10-04 03:00:00 | 8 | 8 | H 100 % | 57 |
| 2023-10-04 04:00:00 | 17 | 12 | 71 % | 61 |
| 2023-10-04 05:00:00 | 24 | 20 | 83 % | 63 |
| 2023-10-04 06:00:00 | 103 | 62 | 60 % | 65 |
| 2023-10-04 07:00:00 | 130 | 97 | 75 % | 68 |
| 2023-10-04 08:00:00 | 114 | 73 | 64 % | 58 |
| 2023-10-04 09:00:00 | 83 | 47 | 57 % | 60 |
| Summary | SUM: 12902 | SUM: 7532 | AVG: 60 % | |

H - highest value in the column, bolded H is highest H value in report
 **"n/a" - means the sign did not collect any data at the time stipulated in the report. "n/a" values are NOT included in calculations.

