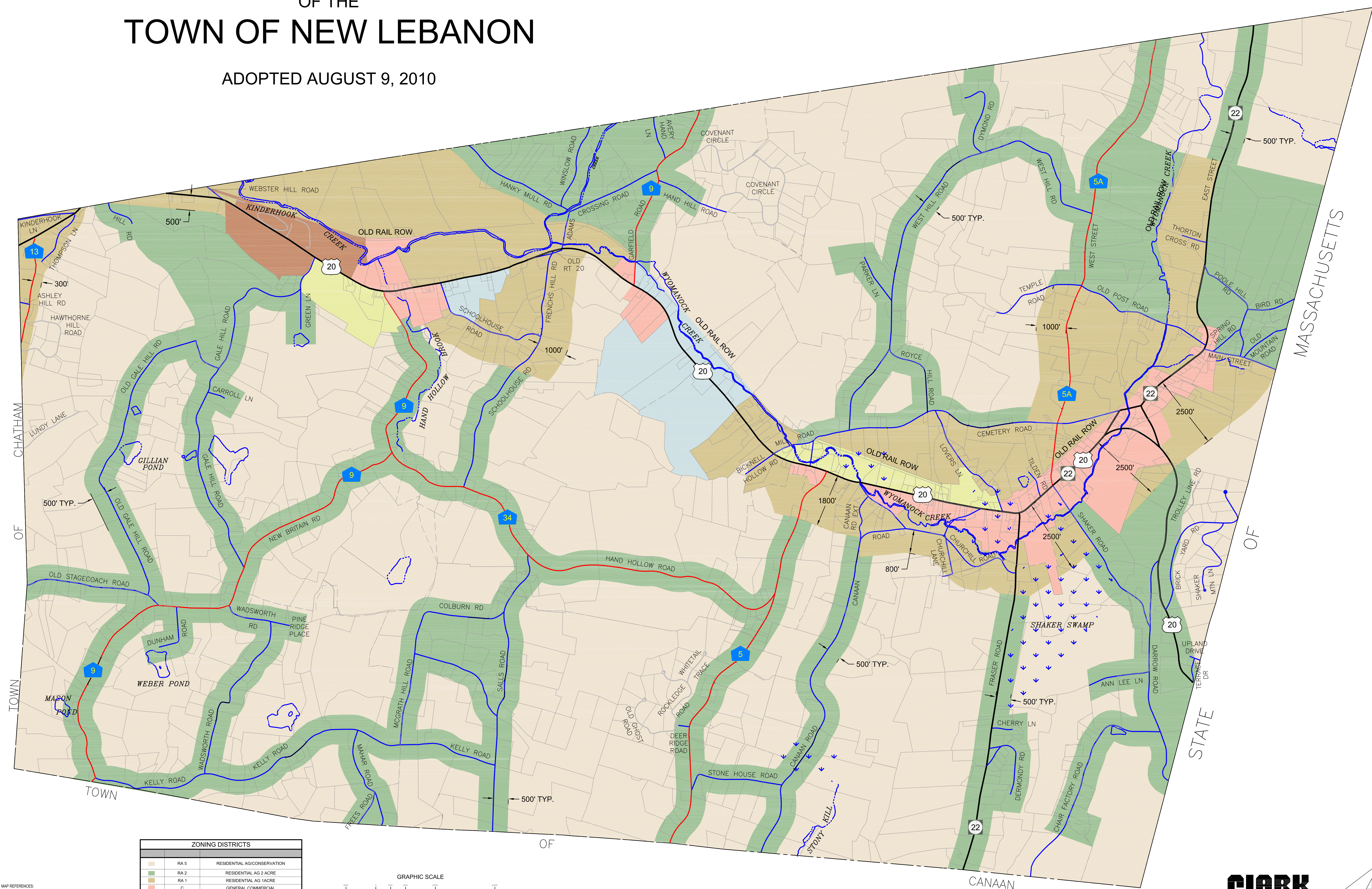


# ZONING DISTRICTS

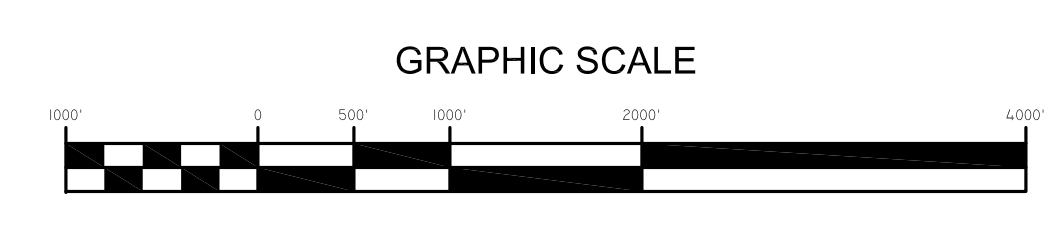
## OF THE

# TOWN OF NEW LEBANON

ADOPTED AUGUST 9, 2010



ZONING DISTRICTS	
<span style="display:inline-block; width:10px; height:10px; background-color:#d9ead3;"></span>	RA 5 RESIDENTIAL AG/CONSERVATION
<span style="display:inline-block; width:10px; height:10px; background-color:#f4cccc;"></span>	RA 2 RESIDENTIAL AG 2 ACRE
<span style="display:inline-block; width:10px; height:10px; background-color:#fce4d6;"></span>	RA 1 RESIDENTIAL AG 1 ACRE
<span style="display:inline-block; width:10px; height:10px; background-color:#fff2cc;"></span>	C GENERAL COMMERCIAL
<span style="display:inline-block; width:10px; height:10px; background-color:#f4cccc;"></span>	C-REC COMMERCIAL RECREATIONAL
<span style="display:inline-block; width:10px; height:10px; background-color:#d9ead3;"></span>	C-I COMMERCIAL INDUSTRIAL



MAP REFERENCES:  
 1. COLUMBIA COUNTY REAL PROPERTY SERVICES 2008 TAX MAPS.  
 2. COLUMBIA COUNTY ENGINEERING DEPT.  
 UNOFFICIAL MAP OF NEW LEBANON, LAST REV. 2010/11  
 3. COPYRIGHT 2009 CLARK ENGINEERING & SURVEYING, P.C.  
 4. ALL RIGHTS RESERVED AND NO WARRANTY IS MADE.  
 5. THIS MAP IS A VIOLATION OF APPLICABLE LAW, UNLESS OTHERWISE NOTED.  
 6. THIS MAP IS THE PROPERTY OF CLARK ENGINEERING & SURVEYING, P.C.  
 7. THIS MAP IS A VIOLATION OF APPLICABLE LAW, UNLESS OTHERWISE NOTED.  
 8. THIS MAP IS THE PROPERTY OF CLARK ENGINEERING & SURVEYING, P.C.  
 9. THIS MAP IS A VIOLATION OF APPLICABLE LAW, UNLESS OTHERWISE NOTED.  
 10. THIS MAP IS THE PROPERTY OF CLARK ENGINEERING & SURVEYING, P.C.

**CLARK**  
 ENGINEERING &  
 SURVEYING, P.C.  
 20 SHAKER RD., BOX 730, NEW LEBANON, NY 12125  
 TEL: (518) 794-8613 FAX: (518) 766-5663  
 www.clarkpc.com